

The image shows the interior of a large, ornate dome, likely the Grand Baltic in St. Petersburg. The dome is covered in intricate frescoes and gilded architectural details. At the top, there are large arched windows with blue glass. Below them, there are several golden statues of figures in classical attire. The main body of the dome is decorated with a series of smaller frescoes and gilded panels. A large, ornate chandelier hangs from the center of the dome. The overall atmosphere is one of grandeur and historical significance.

Shore Excursions

Grand Baltic

June 19, 2019

15 nights all-inclusive

Choose from an exciting range of excursions

This booklet details the optional excursions available during your cruise aboard Saga Sapphire. Each has been carefully planned to help you make the most of your time ashore, allowing you to gain a better understanding of the places you are visiting, without the worry or hassle of exploring independently. Wherever possible we have included a choice of excursions to match a variety of tastes and walking abilities. We also ensure that the main sights are always included, and balance the itinerary with lunch stops and rest breaks.

Please note: The route used and the order of sights visited on any excursion may vary on the day.

Grand Baltic

PORT OF CALL

Copenhagen	6
Gdansk	11
Stockholm	15
Helsinki	21
St Petersburg	24
Tallinn	38



How to book

There are three ways to book your excursions, by telephone, online or on board. To avoid disappointment, we strongly recommend that tours are booked prior to sailing as spaces are filled very quickly. Please refer to the shore excursion pricing enclosed. Every excursion available during your cruise will be listed, including those in selected ports where you can enjoy more than one excursion on the same day. When you have decided which excursions you would like to join, you can now book online for immediate confirmation, you no longer need to complete and return a booking form. Simply log in to your holiday account at travel.saga.co.uk/managemybooking to book, alternatively you can call our cruise consultants FREE on 0800 056 7534 to confirm your choice and make payment.

If you would prefer to book your excursions on board, then please speak to the shore excursion team who will confirm your tour adding the cost to your on-board account. The shore excursions desk is located in the ships reception area. Please refer to the daily programme for the booking deadline for each excursion. You should be aware that all bookings are subject to our excursion conditions as detailed on the last page.

Also look out for...

Something different

Perfect for people who may be visiting a port for the second time, this highlights tours which include something a little out of the ordinary.

Limited availability

There is limited space on these excursions, therefore early booking is highly recommended.



A meal, refreshments or alcohol tasting is included where you see these symbols.

“Whether it’s attending a mesmerising ballet performance or riding a rollercoaster at the Tivoli Gardens, your Baltic voyage has a host of fantastic excursions on offer.”

Simon Giles

Senior Shore Excursion Executive

Walking Information

To help you choose the excursions most suitable for you, we have graded each according to the walking involved, as detailed below:



Panoramic tour: A slower-paced excursion with the majority of sightseeing taking place from your vehicle. There may be a short walk at the port to join your vehicle and any other walking will be at your own discretion, for example at photo stops.



Easy activity: Up to approximately 500 yards on mainly flat terrain, with the possibility of some steps.



Moderate activity: Between 500 yards and one mile over mixed terrain, often with steps.



Strenuous activity: Considerable walking for distances over a mile, usually over uneven terrain with many steps.

Watch the manoeuvres of a T-34 tank in Tallinn



Your questions answered...

To help make choosing your excursions as easy as possible, we have answered some of your frequently asked questions.

What should I wear ashore?

First and foremost, we recommend that you wear comfortable, low-heeled shoes for all excursions. Casual clothing is perfectly acceptable, although if your excursion visits churches, mosques or other religious sites we would suggest that you dress conservatively and ensure your arms and legs are covered. For safety we recommend that you leave jewellery and other valuables in the safety deposit box in your cabin or at reception during excursions.

How will I know what time my excursion begins?

The envisaged departure times of all tours are shown on the shore excursion pricing and can be viewed on the website by logging into 'MyHoliday' at travel.saga.co.uk/management/mybooking. Actual departure times will be confirmed in the daily programme, which will be delivered to your cabin.

What happens if my chosen excursion is full?

We will offer an alternative tour departure time where possible. Your confirmation letter will list all the tours you have been booked on. For those wishing to book online, please note that the website will only allow you to book those tour departures which still have availability. Should additional capacity become available at a later date, then this will be advertised on board and offered on a first come, first served basis.

How can I make sure I am on the same excursion vehicle as my friends?

If you wish to travel with your friends please arrive together when joining your excursion and we will do our best to seat you all on the same vehicle.

I have a disability. Will I have a problem embarking and disembarking the ship?

Please enquire in advance whether we will be able to accommodate your needs on your preferred tours. It is important to keep in mind that shore excursion operators are subject to the laws of their own country in respect to accommodating the needs of guests with disabilities. The decision whether or not to provide mobility assistance to a guest and their mobility assistance device (collapsible wheelchair, walker etc) up or down the ship's gangway is at the sole discretion of the captain, based on his evaluation of guest and crew safety. Please note that scooters are not permitted on the tour vehicles.

The splendour of Tallinn's skyline





A gilded dome spotted in St Petersburg

What type of vehicles are used?

The shore excursions presented in this booklet require passengers to use a coach or other forms of transport with two or three steps, at least 10 inches high each. Neither Saga nor the local suppliers are able to provide portable steps to access coaches due to insurance implications. Most, but not all, coaches used can accommodate collapsible wheelchairs which may be stored in the luggage compartment under the coach at the discretion of the local coach operator. It should be noted that escorts, guides, drivers and ship board staff are not obliged to lift guests into vehicles. The on-board facilities are for emergency use only and may only be made available at the discretion of the local coach operator, subject to local regulations.

Please note: Some countries have local restrictions that prohibit the idling of engines when parked at venues, which in turn may affect the heating or air-conditioning.

Please do not hesitate to visit the tours & travel office should you have any further queries.

What does 'land by launch or tender' mean?

At most ports the ship will berth in a harbour, so you'll walk along the gangway into the main area. At some ports your ship will anchor off shore. This means you will join a smaller boat and sail to shore. These are known as 'tenders' or 'launches'.

Safe boarding of a tender or launch

Prior to embarking a tender or launch, all passengers will be required to demonstrate their ability to step unaided across a marked distance of 35cm. This is to ensure safe boarding of the tender or launch.

Please note: If for any reason the ship is diverted or moved away from a berth to anchor, the step test will take place.

Copenhagen, Denmark

By the 11th century, Copenhagen was already an important trading and fishing centre and today you will find an attractive city which, although the largest in Scandinavia, has managed to retain its low-level skyline. Discover some of the famous attractions including Gefion Fountain and Amalienborg Palace, perhaps cruise the city's waterways, visit Rosenborg Castle or explore the medieval fishing village of Dragoer. Once the home of Hans Christian Andersen, Copenhagen features many reminders of its fairytale heritage and lives up to the reputation immortalised in the famous song 'Wonderful Copenhagen'.

FACTFILE

Population: 600,000 (approximate)

Language: Danish

Currency: Danish Kroner (DKr)

Time difference: UK+1

Climate: Temperate coastal climate and cool summers averaging 20°C

Ship berths at: Langelinie Pier

Distance from centre: 2 miles (approximate)

USEFUL INFORMATION

Shopping: Langelinie Pier

Shop opening hours: Shops are open from Monday to Friday between 1000-1800. On Saturday and Sunday, shops are open between 1000-1600.

Post office: There are post offices in the centre of Copenhagen open Monday to Friday between 0830 to 1900 and Saturday between 0830 to 1400 but stamps can be bought at all large supermarkets.

Banks: A 24-hour ATM is at Osterport Station

Tourist office: At Vesterbrogade 4B. Open weekdays from 0900-1600 and Sundays from 0900-1400. Tel: (+45) 70 22 24 42.

How to phone home: To call the UK dial 00 44 followed by the full STD number, but omitting the first zero

Emergency services: 112

Two Kingdoms in a Morning

4 ½ hours



The Øresund Bridge

Leaving the quayside, you travel from Denmark to Sweden by crossing the Øresund Strait which forms the border between the two countries. The international European route E20 crosses the strait by means of the impressive Øresund Bridge, known all over the world from the television series 'The Bridge'. Connecting the Danish capital of Copenhagen to the Swedish city of Malmö, the Øresund Bridge is an engineering marvel. It is the longest combined road and rail bridge in Europe and connects two major metropolitan areas. Apart from the main cable-stayed bridge, which is about six miles long, the crossing also includes a two-and-a-half-mile tunnel and an artificial island called Peberholm, which has an area of 325 acres. Apart from rail and road passengers, only biologists are allowed access to Peberholm, which is being allowed to develop into a nature reserve. Construction of the crossing began in 1995 and it opened to traffic five years later. After a drive of approximately one hour, you reach Malmö, Sweden's second largest city. Here you stop for photos of the Twisted Torso skyscraper - the tallest building in Scandinavia - and enjoy a short city tour on your coach. Afterwards, you have some free time to visit Malmö's main square, Stortorget, and the picturesque cobbled Lilla Torg or Little Square, before returning via the Øresund Bridge to Copenhagen.



E Something different

This tour involves minimal walking, as most of the sightseeing will be from the coach. Walking during your free time in Malmö is at your discretion. Warm, waterproof clothes are recommended, and you should note that there are some cobbled streets in Malmö. Please bring your passport, as you will be crossing an international boundary and there may be a check at the frontier.

Wonderful Copenhagen and Tivoli Gardens

4 hours



Perhaps take a ride on one of Tivoli's rollercoasters

Copenhagen is a city filled with wonder, whether seen in its majestic architecture, the mermaid that greets visitors or Tivoli Gardens – a beautiful green space filled with exciting attractions and energy. Keep your camera to hand as you pass many of the city's most spectacular sights: see the grand façade of City Hall, which appears in Danish dramas *The Killing* and *Borgen*, before continuing through the colourful Nyhavn canal district. Look out for the third incarnation of Christiansborg Palace (the previous two both burned down) before arriving at the famed Little Mermaid statue for a photo stop. Unveiled in August of 1913, the mermaid was a gift from Danish brewer Carl Jacobsen to Copenhagen, inspired by Hans Christian Andersen's fairy tale and sculpted by Edvard Eriksen. Despite losing her head twice and being defaced several times by paint, the mermaid continues to welcome those arriving into the port. A further stop is made outside of Amalienborg Palace – official residence of the Danish royal family. After your brief panoramic tour of the city, you will arrive at Tivoli Gardens, which opened in 1843 as a pleasure park and continues to wow visitors today. Enjoy free time to perhaps ride the 1914 wooden rollercoaster – still operated by a 'brake man' – or pass along 'The Alley', styled on a fantasy Danish market town. Alternatively, there are plenty of other thrill rides to keep you entertained. Perhaps experience the wonder that Walt Disney found in 1951, inspiring him to build his own place of wonder, before returning to the port.



Something different

Walking during your time in Tivoli gardens is at your discretion. There will be at least 400 yards of essential walking on this tour.

City Overview and Harbour Cruise

3 hours



Guard at the Amalienborg Palace

Travel to Gammel Strand, the former fish market, where you board a canal boat for a memorable 50-minute cruise along the city's waterways and through the harbour. Enjoy the views as you sail along the narrow canals past Christiansborg Palace, the Nyhavn area, into the open harbour and on to the Langelinie district, where you might get a glimpse of your cruise ship. Then explore the Christianshavn area, with its houseboats, old schooners and very low bridges, and venture into the inner harbour to see Copenhagen's modern Opera House that opened at the beginning of 2005. The tour then continues by coach to those places unreachable by boat. Travel past the Nyhavn canal district to Christiansborg Palace – the seat of the Danish parliament – into the busy pedestrianised area of Stroget, past the Botanical Gardens and the 17th-century citadel of Kastellet. A stop will be made for photographs at Amalienborg Palace, home of the Danish royal family, and you also pass the enchanting Tivoli Gardens and the City Hall. Your return journey to the pier takes you past Rosenborg Castle, home of the Danish crown jewels.



You should expect to walk approximately 500 yards: there are 20 steps at the boat jetty and some cobblestones at Amalienborg Palace. In the event of an unusually high tide, canal boats may not be able to enter the Christianshavn area due to low bridges. In such cases, an alternative route will be taken. Larger groups may be split into two, with half starting their tour with the harbour cruise and the other half going on the coach tour first, and finishing with the cruise.



See the pretty rows of yellow houses of Nyboder in Copenhagen

Explore Copenhagen on Foot

3 hours

The city of Copenhagen is filled with wonder: from enchanting tales to military symmetry and historical architecture. Begin your walking tour with a photo stop at the Little Mermaid – Copenhagen's cherished landmark, based on the Hans Christian Andersen story. Hear how her sacrifice to become a human cost her almost everything. Despite the story's sadness, the city's mermaid continues to welcome visitors to Copenhagen. Continue along the waterfront to Gefion Fountain – a magnificent tiered water feature portraying the story of Gefion, the fabled creator of Zealand. Walk past the city's modernist opera house and enter into Nyhaven, a colourful district full of Renaissance architecture. Enjoy a well-earned stop for refreshments in the Odd

Fellow Mansion and see Amalienborg Palace Square. Afterwards, visit Nyboder, a seemingly infinite row of yellow terraced houses, founded by King Christian IV in the 17th century to house his naval forces. Also see the five-pronged citadel which features an eternal flame, dedicated to the contributions made by Danish military personnel since 1948. Return to the ship with an increased knowledge of this wonderful city.



Please note, as this is a walking tour there will be extensive periods of standing and walking. You should expect to walk at least three miles on this tour.



Step inside Frederiksborg Castle

Castles of North Zealand

5 hours

This tour offers an intimate look inside one of Denmark's most beautiful castles – Frederiksborg Castle – which houses an exquisite chapel, built for nobility with one of the oldest pipe organs in the world. Furthermore, see Kronborg, also known as 'Elsinore' in Shakespeare's Hamlet. Begin by leaving Copenhagen and travelling through the surrounding countryside to the town of Hillerød and the fairy-tale castle of Frederiksborg Castle, originally built in the 17th century. Admire its Renaissance exterior before making your way inside and passing along lavishly-decorated corridors which lead to the site's museum. Your visit will perhaps demonstrate that no expense was spared in construction: the gilded chapel ensures that it is a palace fit for royalty! Saying

goodbye to Frederiksborg, drive to Kronborg Castle, significant for more than Prince Hamlet, your guide will explain the castle's role as a toll-crossing for merchants to access the Baltic Sea. Re-board your tour vehicle and journey back to the port, perhaps still discussing the splendour that the interior of Frederiksborg and the exterior of Kronborg had to offer.



Please note, the visit to Kronborg Castle is an exterior one only. There will be at least one mile of walking on this tour. Photography is not permitted at Frederiksborg Castle. A packed lunch will be provided by the ship.

Seaside Town of Dragoer

3 hours



Discover the charming fishing village of Dragoer

This scenic tour takes you to Dragoer, one of Denmark's oldest and quaintest fishing villages. Set on Amager Island and lapped by the blue waters of the Øresund, Dragoer is well preserved and has retained its historic character due to the fact that conservation work was started as long ago as 1934. In 1968, parking was prohibited in the entire old district, and in 1978 Dragoer became Denmark's first 'pedestrian town', which is now protected by a local preservation plan. Historically, Dragoer was once an international trading post for Hanseatic merchants, and it became a thriving fishing port during the 16th and 17th centuries. After the herring industry dwindled, the town survived as a major centre for shipping, and is now a friendly place with a fascinating history. Your guide will take you on a leisurely stroll through the cobbled back streets to the bustling harbour. Then you have free time to explore: look around the village, browse for souvenirs in some of the small handicraft shops that line the main street or admire views of Øresund Bridge, which has connected Copenhagen with the Swedish town of Malmö since the year 2000. Refreshments will be served at a hotel by the harbour, before you travel back to Copenhagen and your ship.



You will need to walk approximately ¾-mile on this excursion, partly along cobbled streets. There are six steps to access the refreshment venue.

Copenhagen and Christiansborg Palace

3 hours



The new tapestries in Christiansborg Palace

Denmark is home to the oldest monarchy to have reigned continuously in Europe, and on this tour you will see the two principal royal palaces of Copenhagen. Your tour starts with a walk along the waterfront to see the enchanting Little Mermaid, a symbol of Copenhagen since 1913. Continue past the Gefion Fountain and the English St Alban's Church to reach Amalienborg Palace. This consists of four identical Rococo buildings occupying the corners of a square, forming the royal family's winter residence. Originally built for four Danish aristocratic families, it has been a Royal palace since 1794. After a photo-stop here, continue to Christiansborg Palace, the only building in the world to serve as the seat of the executive, judicial and legislative powers of a nation. Standing on the site of a medieval castle, the present baroque-revival palace dates largely from 1907. Enjoy a tour of the state apartments where the Queen entertains visiting VIPs and foreign heads of state. Of special interest are the colourful modern tapestries in the Banqueting Hall, the first of which was presented to the Queen on her 50th birthday in 1990. The final one was delivered ten years later. Designed by Danish artist Bjørn Nørgaard and woven at the Gobelins Tapestry Workshop in Paris, they trace the history of Denmark from ancient times to the eve of the Millennium. Returning to the port, you pass another Royal home - the Renaissance-style Rosenborg Castle.



Flash photography and filming is not allowed inside Christiansborg Palace, and slippers will be provided to put over your shoes. You should expect to walk at least 500 yards on your tour of Christiansborg, with two unavoidable flights of stairs. There is a handful of steps by the Little Mermaid statue.

Gdansk, Poland

Gdansk is situated at the mouth of the Motlawa River, on the southern edge of the Baltic Sea. Historically an important seaport, Gdansk was a member of the Hanseatic League during the middle ages, and changed hands several times between Poland and Prussia. By the 17th century, it had become a very multicultural place, with sizeable German, Polish and Dutch populations. Gdansk was part of the German Empire from 1871 to 1918, but after the First World War was granted autonomy as the Free City of Danzig. Following a further period of German occupation during World War II, the city was restored to Poland under the terms of the Potsdam Agreement. During the 1980s Gdansk was the birthplace of the Solidarity movement, which, under the leadership of Lech Walesa, played a major role in bringing an end to Communist rule in Eastern Europe. Visitors should be aware that much of central Gdansk is inaccessible by motor vehicle, and many of the city's highlights can only be reached on foot: coaches often cannot park or drop passengers near places of interest.

FACTFILE

Population: 460,000 (approximate)

Language: Polish

Currency: Polish Zloty

Time difference: UK-1

Climate: Gdansk enjoys a temperate climate, with warm summers and a risk of rain at any time of the year.

Ship berths at: Westerplatte pier

Distance from centre: 8 miles (approximate)

USEFUL INFORMATION

Shopping: There are plenty of opportunities for shopping in the Old Town, including Madison Mall shopping centre.

Shop opening hours: Shops in Gdansk are usually open Monday to Friday from 1100-1900 and Saturdays from 1000-1300.

Post office: The main post office is at Długa 23.

Banks: There are branches of PKO Bank Polski and other banks all over the city, and ATMs are widespread.

Tourist office: The tourist office is located at Długi Targ 28/29. Telephone: (+48) 58 301 43 55.

How to phone home: For the UK dial 00 44 followed by the full STD number, but omitting the first zero.

Emergency services: For all emergencies dial 112.

Gdansk - City of Solidarity

4 ¾ hours



Learn about the history of 'Solidarity'

Your tour of Gdansk begins with a visit to the Gothic St Mary's Church, the pride of the city and the largest brick church in the world. With its 30 decorated chapels, ancient tombs and 15th-century astronomical clock, this medieval church can accommodate 25,000 worshippers. From St Mary's, continue on a guided tour of the old town with its gabled buildings and quaint shops. During the walk, pass the Town Hall, Long Market and the 15th-century Palace of Artus Court, before pausing at the Neptune Fountain, a symbol of the town's Hanseatic past. From here, continue to the European Solidarity Centre. In the 1980s Gdansk's shipyard workers, led by Lech Walesa, created the Solidarity movement that led to the first cracks in the Communist regime. Learn about the history of Solidarity in this large new complex, opened in 2014 and incorporating seven exhibition halls. Inside you can see a reconstructed Soviet-era prison cell and a typical Polish family living-room, shops of the period as well as original documents and posters. Other displays tell the story of the 1989 Round Table Agreement, and show what working conditions were like in the Lenin Shipyard when Lech Walesa worked there as an electrician. Following your visit, view the Solidarity Square Monument, dedicated to the events of December 1970.



S Limited availability

You should expect to walk about two miles, with occasional steps in the Old Town. Upper levels of the European Solidarity Centre can be reached by a lift. Access to the church interior may be restricted in the unlikely event of our visit clashing with a religious service. The order of sites visited may vary.

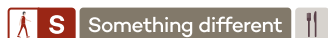
Stutthof and Gdansk

7 ½ hours



Stutthof Camp

Begin this tour with a drive into the Polish countryside to the site of Stutthof Concentration Camp, which was opened on the second day of World War II as the first concentration camp outside Germany. The camp initially consisted of eight barrack blocks for the inmates and a huge building for the SS. In 1942, the SS began to build a new camp: 30 further barrack blocks were constructed, and in 1943 the Nazis added a crematorium and a gas chamber. The gas chamber had a maximum capacity of 150 people at one time. The camp was not liberated until May 9, 1945. Following your visit, return to the city of Gdansk for lunch in a local restaurant, followed by a guided tour of the Old Town. See the Golden Gate, a grand ornamental archway that once allowed access through the medieval city's defensive walls. Pass the Town Hall, the Long Market and the beautiful 14th-century Artus Court. Stop to visit St Mary's Church, the pride of Gdansk. Situated in the centre of the Old Town, this medieval church took 159 years to build and its deceptively plain brick exterior hides a bright, spacious interior with large windows and more than 30 beautifully decorated chapels.



This tour involves walking approximately two miles, with about 15 steps and some cobblestones. Access to the interior of St Mary's Church may be restricted if a service is in progress. Dietary requests must be made to the shore excursion manager on board ship at least 72 hours prior to arrival.

Old Town and Oliwa Cathedral

4 ½ hours



Oliwa Cathedral

Gdansk is perhaps most famous to westerners as the birthplace of Lech Walesa's Solidarity movement, and the shipyards are the most prominent feature of the city. Yet the city is so much more than a working port. Gdansk is a beautiful town of cobbled streets and graceful architecture reminiscent of Amsterdam, and walking through its historic district is like stepping back into the 16th century. This revealing tour starts with the Old Town, where the majority of the attractions lie and where history has left its mark. Pass through the Green Gate, a grand ornamental arch that leads to the Royal Way, which is lined with impressive buildings with elaborate façades. Admire the towering Gothic town hall, the beautiful Neptune Fountain and Artus Court - a great 14th-century hall that was used as a meeting place for the city's merchants. Wander along picturesque St Mary's Street, which is lined with 17th-century houses and quaint shops, and visit St Mary's Church - the world's largest brick church - which took 159 years to build. See the 30 beautifully decorated chapels, the 46 foot-high astronomical clock. A testament to the city's shipbuilding industry is the 15th-century Zuraw Crane, the biggest medieval crane in Europe, which was used for installing masts on ships and for handling heavy goods. Your final stop is Oliwa Cathedral. A mixture of the Gothic and baroque styles, the cathedral is famous for its 18th-century Rococo organ. Enjoy a musical performance on the organ before returning to your ship.



You will need to walk approximately two miles on this tour, with a total of 13 steps. In addition, you will need to remain standing for quite long periods while your guide gives a commentary. Access to the interiors of St Mary's Church and Oliwa Cathedral may be restricted if a service is in progress.

Kashubian and Gdansk

7 hours



The Kashubian Museum in Kartuzy

If you believe the legend, the Kashubian district of Eastern Pomerania was created by giants, whose footprints account for the numerous hills and lakes that characterise this region. Little known to foreigners, it is famous in Poland thanks to its natural beauty, heritage and unique culture. Discover this fascinating district as you board your coach and head off to Kartuzy, the regional capital, in the company of a knowledgeable local guide. Kartuzy is home to the Kashubian Museum, established soon after the end of World War II by Franciszek Treder, a local teacher and historian who wished to preserve the history of the area. Dedicated to the bygone world of Kashubian culture, the museum includes fine examples of local embroidery, pottery, clothing, tools and furniture. After touring the exhibits, take a scenic drive to a local restaurant for a three course lunch, accompanied by plenty of folklore and finished with a shot of vodka, a small beer and tea/coffee. In the afternoon, return to the city of Gdansk for a short tour of the Old Town. The city's history has left a fine collection of buildings and monuments in the Gothic, Renaissance and Baroque styles, although many have been restored after severe damage during World War II. To get a flavour of this ancient city, your guide will take you from the Green Gate to Long Street and the Long Market, viewing centuries-old dwellings, the Town Hall, Arthur's Court and the Neptune Fountain. See charming St Mary's Street with its lively atmosphere, quaint shops and lovely terraced houses, before heading back to the port.



This tour involves walking about two miles, with occasional steps and some cobblestones. Access to churches may be restricted if a service is in progress. Dietary requests must be made to the shore excursion manager on board ship at least 72 hours prior to arrival.

Gdansk and the Galleon

4 hours



All aboard your replica 17th-century galleon

Throughout the middle ages, being a trader was tough: rich lords levied high taxes on those travelling through their domains, and at sea, the risk of pirates was ever-present. International commerce was under threat and a solution was required. That solution was the Hanseatic League, founded in 1358 and consisting of many trading ports. The league allowed commodities to be safely traded across the world and financial leniency was often given by those that ruled over the trading routes. It was as part of the league that Gdansk evolved, being shaped by its international population who emigrated from the far corners of the globe. Today, pass along the same waterways that the mercantile population passed, on a replica 17th-century galleon. It is a grand vessel – one fit for a king, and from it your informative guide will highlight such sights as the shipyard, Wistoujskie Fortress – a 16th-century fortification – and Westerplatte. Without a motor, the galleon allows for you to fully appreciate the sights and sounds of such a vibrant city – rebuilt with great consideration after the destruction brought by World War Two. Disembarking in the old town, where medieval sailors once unloaded their goods, your guide will walk with you along the colourful streets, filled with Gothic, Renaissance and baroque façades. Make your way along Long Street towards Long Market, past the town hall before arriving at Gdansk's symbolic water feature – the Neptune Fountain. Enjoy some free time here before making your way back to your 21st-century ship.



New Something different

There will be at least one and a half miles of walking on this tour. Please note, the ship is not exclusive to Saga guests.



The famous Neptune Fountain

City and Surroundings

3 ¾ hours

This tour starts with a scenic drive to Nowy Port Lighthouse, which ranks among the most beautiful structures of its kind around the Baltic Sea. Inaugurated in 1894, it lit the entrance to the port of Gdansk for ships until 1984. From this point you will be able to see a panoramic view of Westerplatte with its monument on the opposite side of the port channel. This marks the spot where World War II broke out on September 1, 1939. The Polish garrison held out against the attack for seven days before surrendering to the German forces. The site is now a memorial to the defenders, and includes some of the ruins caused by the shelling, and a massive monument that towers above the area. Continue next to Oliwa Cathedral, for a view of this impressive structure. Situated in

the grounds of an old Cistercian monastery, Oliwa Cathedral dates back to the 13th century and is a mixture of the Romanesque, Gothic and Rococo styles. There will be a final stop for photographs along the Royal Way, where many fine examples of Gdansk's architectural heritage can be seen, before you head back to your ship.



There is approximately half-a-mile to walk on this tour. There are five steps to negotiate at Oliwa Cathedral. Further walking in Gdansk during your free time is at your discretion. Access to the interior of Oliwa Cathedral may be restricted if a service is in progress.

Stockholm, Sweden

Gracefully set on 14 islands and connected by 40 bridges, Stockholm is the Baltic's largest seaport. Surrounded by clear waters and unspoilt countryside, it is one of the most beautiful capitals in the world. The city's rich and fascinating history is reflected in the ornate architecture of its churches, castles, bridges and elegant open squares. The Old Town (Gamla Stan) is located on the island of Stadsholmen, and is characterised by narrow medieval streets. Here you can see the majestic exterior of the 18th-century Royal Palace and Stockholm Cathedral.

FACTFILE

Population: 950,000 (city), 2,300,000 (greater urban area)

Language: Swedish

Currency: Swedish Krona

Time difference: UK+1

Climate: Cool and temperate with frequent rain, with an average of 9 hours' daily sunshine from May to July.

Ship berths at: Stadsgården 167 or Frihamnen 634

Distance from centre: Approximately 2½ miles

USEFUL INFORMATION

Shopping: The main shopping area is in the city centre.

Shop opening hours: Shops are open from Monday to Friday between 1000-1800, Saturday between 1000-1700 and Sunday between 1100-1600.

Post office: Stamps for postcards are sold in grocery stores, tobacconists and 'Pressbyrån' kiosks displaying a yellow posthorn symbol.

Banks: Swedbank at 3 Stureplan is open from Monday to Friday between 1000-1500.

Tourist office: The tourist office is located at Stadsgården 167 by the pier or in the city centre at Kulturhuset, Sergels Torg 3-5. Tel: (+46) 08 508 28508. Open weekdays 0900-1900 and weekends 0900-1600.

How to phone home: To call the UK, dial 00 44 followed by the full STD number, but omitting the first zero.

Emergency services: Dial 112.

Stockholm by Land and Water with Fika

4 hours



Stockholm Harbour

What better way to explore Stockholm, a city with a deeply-ingrained naval history, than from the water, passing some of the most significant districts of this fascinating city. See where the illustrious Vasa, a 17th-century warship, met her demise, the 'Feather Islands', where the real archipelago islands begin, and discover why Stockholm's port was vital to the expansion of Sweden's empire. Start at the city's 'old town', Gamla Stan. Here, you will pass the baroque façade of the Royal Palace, official residence of His Majesty the King and nestled among numerous other magnificent palaces. Pass the Royal Opera House, the Swedish national venue for opera and ballet since January 1773, followed by the shipping and business areas of Hamngatan and Segels Torg. Afterwards, leave your coach and board a motor launch for a 'Royal Canal' cruise. You'll be taken into Eco Park, Stockholm's National City Park and an area of natural beauty, and the lush park areas of Djurgården – once a royal hunting area. The Strandvagen winds and weaves its way past several landmarks including the Vasa Museum (a short distance from where she sank), and the Skansen Open Air Museum before heading out onto open waters. Pass the Feather Islands and the amusements known as Gröna Lund Tivoli before reboarding your coach. Enjoy a traditional Swedish cinnamon roll with coffee or tea in a daily tradition known as 'fika' at a local Swedish café before returning to the port.



There will be approximately 600 yards of walking on this tour. Guests must be able to climb the steps of the coach (approximately 10) and into the boat.

Stockholm and the Vasa Museum

3 hours



Inside the Vasa Museum

It was built as a naval symbol of Sweden's 17th-century power, but sank within one nautical mile of starting its maiden voyage. Vasa never made it out of Stockholm harbour, and today you have an invitation to see this well-preserved vessel for yourself. Before visiting the museum built around Vasa, enjoy a panoramic sightseeing tour of the city. Start in Gamla Stan, Stockholm's enchanting medieval old town and home to the Royal Palace, residence of the Swedish monarch, complete with views across the city's inner harbour. Pass the Royal Dramatic Theatre before arriving on the island of Djurgården, Stockholm's recreation centre. Here, you will find the Vasa Museum, considered to be an authentic piece of 'living history'. On 10th August 1628, Vasa began its maiden voyage – which lasted less than 1500 yards. Thousands of the city's citizens watched as the ship lurched to one side and quickly flooded, causing the deaths of 30 crew members. It was built too heavy. Vasa remained undisturbed for 328 years until amateur archaeologist and fuels engineer Anders Franzen was 'dragging' the harbour when he pulled up a plug of black, waterlogged oak. Vasa was found. Today, the vessel is fully displayed in a multi-tiered museum after an extensive preservation process, and during your guided visit of the museum, you will perhaps discover what life would have been like for those on board and learn how the conditions of the water preserved Vasa better than those above. After your tour, enjoy some free time to explore the exhibitions further before passing through Östermalm back to the port.



There will be between 500 and 600 yards to negotiate throughout this tour and approximately 30 steps to climb.

The Best of Stockholm

7 hours



See Stockholm City Hall

As the name suggests, this tour shows off the very best of Stockholm, perfect for those who want to see everything that this wonderful city has to offer. Start in the residential district of Södermalm, characterised by its trendy shops and creative energy. Here, you will find the Western Bridge, spanning the Riddarfjärden and offering extensive views of the cityscape. Consider exiting the coach for a photo opportunity to capture this urban vista. After spotting City Hall's splendour in the distance, it is breath taking up-close. Arrive at City Hall and enjoy a guided tour of this magnificent building, renowned for being the site for the annual Nobel Prize banquet. Perhaps enjoy the spaciousness of the Blue Hall and Golden Chamber before taking a stroll around its garden. Continue past the Royal Dramatic Theatre to the island of Djurgården, a centre of recreation and home to the Vasa Museum. Enjoy a guided tour of the museum to discover how this 17th-century vessel sank on its maiden voyage. After your tour, you have some free time to explore the museum followed by a short journey to the old town, for an opportunity to rest your legs and where lunch will be served – Swedish meatballs with mashed potatoes and lingonberry jam. Afterwards, embark on a guided walk through the Old Town, where 13th-century historic elegance can be found, down narrow alleys and cobblestone streets. Travel a short distance by coach to the quay for the final part of this tour – a canal cruise along Strömvägen, passing Stockholm National Park and the Feather Islands. Leave the boat and enjoy a scenic drive back to the pier.



There will be at least one and a half miles of walking on this tour, and approximately 60 steps to negotiate. Walking during your free time is entirely at your discretion.

Modern and Historic Stockholm

3 ½ hours



The Swedish Academy in Stockholm

Dramatically located at the point where Lake Mälaren meets the Baltic Sea, Stockholm was founded as a fortress in the mid-13th century. Over time, the fortress attracted inhabitants who set up home outside its walls, and the town eventually spread over more than a dozen islands and onto the mainland. Today, the capital of Sweden encompasses five unique city districts, each with its own special character. You enjoy a splendid panoramic view of the city from Fjällgatan, a popular site for taking pictures. Continue your tour past Sergels Square, the National Museum and the Royal Opera House, to reach Riddarholmen - the Island of Knights. Here you visit one of the oldest buildings in Stockholm, Riddarholmen Church. This is the final resting-place of Sweden's kings and is the only surviving medieval monastic church in Stockholm. Walk from here into the old town. Wandering along the narrow cobbled streets of the Gamla Stan, Stockholm's oldest quarter, the medieval atmosphere is unmistakable. Many of the houses date from the 16th and 17th centuries, complete with Baroque doorways and ancient coats-of-arms. Visit the Coronation Church, which has witnessed numerous royal weddings and other state occasions. Your tour continues around the city, passing interesting sights and buildings as you view the verdant island of Djurgården, once a royal hunting reserve. Pass the Great Square and the former stock exchange, now the home of the Swedish Academy and of the Nobel Prize Museum, before returning to the ship.



There are approximately 1¼ miles of walking involved during this tour, partly over sloping ground and cobblestones.

Historic Sigtuna

4 hours



Take a stroll along Sigtuna's main street

Join your coach for the drive to Sigtuna, the oldest town in Sweden, founded in 980 by Erik Segersäll, the country's first Christian King. The town was a royal stronghold for some 250 years and the first Swedish coins were minted here. St Mary's, built in the 13th century as a monastic church by the Dominican community, still remains largely intact. This Dominican monastery played an important role in Sweden during the middle ages, and provided the country with several archbishops and other important church officials. Sigtuna was still only a small town with a population of about 600 at the end of the 19th century, but since then its population has grown to about 8,500, mainly as a result of the development of Arlanda Airport, only ten miles away. Despite this increase in size, Sigtuna remains largely a picturesque medieval town with restaurants, cafés and small shops. On your tour you will see the red-brick Gothic St Mary's Church, the ruins of St Olaf's Church and Sörga Gatan, the old main street. Stroll along the delightful little streets with their wooden houses and shops, and see the town hall, the smallest in Scandinavia. A stop for refreshments is included at the Café Tant Brun, located in one of the town's oldest buildings. You also have free time to explore on your own before heading back to the ship.



You should expect to walk approximately 900 yards, partly on cobblestones. There are three steps at the Café Tant Brun. Additional walking during your free time is at your discretion. The coach journeys between the port and Sigtuna take approximately one hour each way and both journeys are via the same road.



The Skansen Open Air Museum

History and Traditions at the Skansen Museum

3 hours

Within the stylish, bustling city of Stockholm is the Island of Djurgården, an oasis of both lush greenery and culture. On this tour, visit the island and spend time exploring Skansen, the shining jewel in the city's crown and the oldest outdoor museum in the world. Begin with a panoramic tour through the city: through the city centre, along the fashionable Strandvägen Road and across the bridge to Djurgården itself. Among its collection of museums are the ABBA Museum and the Vasa. Here, enter Skansen, a living history museum which replicates the evolution of Sweden's extensive past. You are invited to enter a world 'where history is present': discover the contrast between those who farmed the land and those that lived in grand mansions before looking inside the many

workshops that continue to be used today. As well as a living representation of Sweden's history, perhaps spend some free time in the Skansen aquarium, featuring an array of exotic animals. Skansen is a site full of splendour, but don't forget to call into the handicraft store, to pick up a suitable souvenir, before returning to the ship.



There will be at least 750 yards to negotiate on this tour and walking during your free time is at your discretion.

Old Town and Hallwylska

3 ½ hours



Impressive Hallwylska Palace

Enjoy a panoramic drive through Stockholm to reach the city's oldest and quaintest quarter, the old town or Gamla Stan. Leave your coach here and join your guide for a stroll along the narrow streets, which have changed little since the 15th and 16th centuries, with their baroque doorways and coats-of-arms. See Stortorget, the large square at the heart of the old town, on which the former stock exchange, now the home of the Swedish Academy, stands. Look out also for the city's narrowest street, Mårten Trotzigs Gränd. Afterwards, re-join your coach for a short drive to Hallwylska Palace. Built between 1893 and 1898 to the design of Isak Gustaf Clason for Count Walther von Hallwyl and his wife Wilhelmina, the palace was designed to accommodate the count's workplace and the countess's large art collection. While the exterior of the building and its courtyard are built in a neoclassical style reminiscent of Renaissance buildings in Venice, the interior was fully up-to-date for its time: it was lit by electricity and was equipped with central heating, telephones and bathrooms. The palace was donated to the Swedish government in 1920 together with the works of art that the countess had collected during a lifetime of travelling all over the world. You visit the main floor and its principal rooms, which include the dining room, portrait gallery, arms room and the large living room. After visiting the palace, return by coach to your ship.



Limited availability

Expect to walk up to 900 yards along relatively level ground with some cobblestones. Inside Hallwylska Palace there are approximately 20 steps to the main floor, 20 steps to the upper floor and an additional 20 steps to the lower floor.

Behind the Scenes at the Royal Opera House

3 hours



The Stockholm Opera House

Few theatres, if any, have featured the assassination of a reigning monarch and subsequently immortalised the event on its own stage in a theatrical masterpiece written by one of history's most famous opera composers. On this tour, peek behind the curtain at the Royal Opera House in Stockholm and into a theatrical world of wonder and intrigue. Before your arrival, pass along the fashionable district of Ostermalm and travel through Strandvagen, featuring plenty of attractive houses before arriving at the Royal Opera House. At the waterfront theatre built with plenty of splendour, embark on a backstage tour - visiting the king and queen's royal suite, and many of the building's other hidden rooms. From your informative guide, discover how the theatre was quickly considered 'one of the world's most perfect theatres' after it opened in 1782, and why Gustav III was assassinated by Jacob Johan Anckarstrom at a masked ball just ten years after opening: an event explored in Giuseppe Verdi's opera, *A Masked Ball*. After your exclusive tour of this fascinating venue, enjoy a glass of sparkling wine and perhaps reflect on the heritage and international fame of Stockholm's Royal Opera House.



New

Limited availability

Something different



You should expect to walk at least 600 yards across flat ground, with frequent stairs at the opera house. This tour is not recommended for guests with limited mobility.



The waterways of Stockholm

Waterways of Stockholm

2 hours

Set on a string of islands and surrounded by the protective embrace of 24,000 outlying islands, water understandably plays an important part in the life of Stockholm, and one of the best ways to appreciate the splendour of this city is by boat. With water accounting for one third of Stockholm's total surface area and parks and woodland adding another third, this is a unique and attractive capital. The centre of Stockholm is strategically placed where freshwater Lake Mälaren meets with Saltsjön (the Baltic). As you glide along the numerous waterways, you can enjoy the city from a different perspective and sail past part of the national park of Djurgården. A boat tour is the simplest and most enjoyable way to acquaint yourself with the 'city that floats on water'.



There is approximately 150 yards to walk from the pier to the embarkation platform. There are usually two or three steps to negotiate when getting on and off the boat, plus others if you wish to reach an upper or lower deck. If you choose to sit inside, a window seat cannot be guaranteed. The guide's commentary may be harder to hear if you sit outside. The boat is not exclusive to Saga and the commentary may be in other languages as well as English. Please be aware that the boat does not actually enter Lake Mälaren.

Helsinki, Finland

The cultural, commercial and political centre of Finland, this delightful Scandinavian capital has no high-rise buildings and an intimate small-town feel, with spacious streets interspersed with gardens and parks. As the most northerly of European capitals founded by King Gustavus Vasa of Sweden, the city's grand architecture reveals a mixture of Swedish, Russian and international influences and it is often called the 'white city of the north' as many of its buildings are made from a local light-coloured granite.

FACTFILE

Population: 570,000 (approximate)

Language: Finnish

Currency: Euro

Time difference: UK+2

Climate: Cold and temperate

Ship berths at: Port of Helsinki

Distance from centre: 1 mile

USEFUL INFORMATION

Shopping: The nearest shopping area is located at Market Square

Shop opening hours: Department stores open from Monday to Friday between 0900-2000. Saturday 0900-1800 and Sunday between 1200-1800

Post office: The post office is located at Mannerheiminaukio 1B. Open Monday to Friday between 0700-2100. Weekends between 1000-1800

Banks: The nearest bank is located at Aleksanterinkatu 36. Open Monday to Friday between 0900-1600. 24-hour ATMs available

Tourist office: The tourist office is located at Pohjois-Esplanadi 19. Open Monday to Friday between 0900-1800. Weekends between 1000-1600

How to phone home: To call the UK dial 00 44 followed by the full STD number, but omitting the first zero

Emergency services: Dial 112

Old Town Porvoo and Tea at Haikko Manor

5 hours



Explore the Old Town of Porvoo on foot

Leaving the pier, drive through Helsinki, taking in the most famous sights of the city before starting your journey towards Porvoo. A 45-minute drive through beautiful Finnish countryside takes you to Finland's second oldest city. Old Porvoo is a treasure-house of historic Finnish architecture and the town plan remains as it was during the middle ages. The red riverside storehouses of the old harbour are said to be the most photographed attraction in Finland. A guided walking tour takes you to the heart of Old Porvoo. The cathedral is situated on top of a hill, dominating the town and its houses. This great church was originally built in wood, but was soon afterwards rebuilt in stone and is today the main landmark in the city. The southern district of Porvoo, built in the Empire style, is a reminder of the period of Tsar Nicholas I, who reigned from 1825 to 1855. He wanted to demolish the overcrowded and highly flammable old town built under Swedish rule, and to replace it with a modern, spacious Russian-style town built to a regular grid plan. Luckily, Old Porvoo was not touched, but the new Russian district grew to the south of it. Architect Carl Ludwig Engel, who also designed the Senate Square in Helsinki, was responsible for the new town. After your walking tour, travel by coach to the beautiful and historic Haikko Manor Hotel, which dates from 1913 and was home to members of the Romanov family following the Russian Revolution. Enjoy afternoon tea in this elegant building before returning to the ship.



Euro coins are required to use public conveniences. This tour involves walking up to one mile across uneven ground and cobbled streets, with occasional steps.

The Fortress Island of Suomenlinna

5 hours



Suomenlinna Fortress

Helsinki's importance as a central hub of culture and commerce has been recognised by its founders, Sweden, the Russians who incorporated the Grand Duchy of Finland into their Russian empire and independent Finland, who reclaimed the city in 1918. To defend the controlling country's interests, a fortification was required. The building of 'Viapori' (renamed 'Suomenlinna' in 1918: meaning 'Fortress of Finland' in Finnish) – a star-shaped defensive structure – began in 1748. Today, enjoy a panoramic drive through Helsinki to Market Square, a historical centre of trade, and arguably Finland's most famous market. Board your waterbus which takes you across to Suomenlinna Fortress Island where your guide will walk you through its fascinating past. Learn about the Anglo-French bombardment of its defences during the Crimean War and see the areas converted into a prison during Finland's fight for independence with Russia. Less than 1000 people call the island home, after many of the buildings were converted into apartments and workspaces, and you can see the conversion for yourself. Enjoy a coffee break with a traditional cinnamon bun before some free time to perhaps visit many of the cosy small shops. Afterwards, return by waterbus to the mainland and your awaiting ship.



Please note, this is a walking tour so will feature lengthy periods of standing and walking distances of over one and a half miles. A packed lunch will be provided by the ship.

Helsinki and the Sibelius Experience

4 hours



The Sibelius Monument

Why not combine the highlights of Finland's beautiful capital with a visit to the home of the country's most famous composer? Enjoy an introductory tour of the city where you can see the lively Market Square, the Old Church and the Swedish Theatre, and marvel at the impressive Parliament Building, the National Museum designed by Eliel Saarinen and Finlandia Hall designed by Alvar Aalto. As you drive through Hesperia Park and Toololahti Bay, you should catch a glimpse of the Finnish National Opera House, a modern building opened in 1993. Your tour then continues to Ainola, the home of Jean Sibelius, Finland's master composer. His home near Lake Tuusula has been preserved as it was during his family's lifetime and still contains the original furnishings. After a tour of the house, re-join the coach for a short drive to see the landscapes that inspired this great composer, and then enjoy a 30-minute performance of some of his greatest works. After the recital drive back to Helsinki, passing the Sibelius Monument before returning to the ship.



You should expect to walk at least 750 yards, some of which is over uneven, sandy pathways. There are approximately 13 steps to negotiate. Subject to traffic conditions on the day, a photo-stop may be made at the Sibelius Monument.

Helsinki Highlights

3 ½ hours



Helsinki's magnificent Lutheran cathedral

Discover the unique and beautiful sights of Helsinki on this fascinating city tour. Marvel at the spectacular architecture including Carl Ludvig Engel's neoclassical Senate Square, built in the old centre in the early 19th century. After stopping in the square to see the Lutheran Cathedral and the Sederholm Residence, you continue on foot to the market square, located on the waterfront. You may like to visit the market hall on your own, where you will see wonderful stalls selling cheeses, fish and other delicacies. You then re-join your coach and continue your journey past the Presidential Palace and the huge red-brick Uspenski Cathedral, the largest Orthodox church in Scandinavia. Drive past the South Harbour to Kaivopuisto, one of the loveliest parks in Helsinki, pass the shipbuilding area and then head back to the city centre via the Evangelical Lutheran Old Church and the 19th-century neoclassical Swedish Theatre. You will also see the exteriors of the Kiasma Contemporary Art Museum, the Parliament Building and Finlandia Hall, a concert and convention centre designed by the world-famous Finnish architect Alvar Aalto. View the Finnish National Opera House before stopping to visit the Törmä Church. Popularly called the Rock Church, this modern Lutheran place of worship is hewn from solid rock and has a copper ceiling. One of the city's most popular tourist attractions, it was designed by brothers Timo and Tuomo Suomalainen and opened in 1969. Your final stop before returning to the ship is at Sibelius Park, where you can view the monument to Finnish composer Jean Sibelius.



There will be at least one mile of walking on this excursion, some of which is over cobblestones, with a few steps to negotiate. Admission to the Rock Church is included.

Scenic Helsinki and Harbour Cruise

3 ½ hours



Step on board for your private boat tour

Start your panoramic city tour from the pier, passing the neoclassical architecture of Senate Square dominated by the cathedral, government and university buildings and the National Library. The Cathedral is arguably Helsinki's most famous building, but the city's oldest stone structure is Sederholm House on the square's south east corner. Continue to the esplanade and drive to Mannerheimintie, a street named after the Finnish military leader Carl Gustaf Mannerheim. Many famous buildings are located here, including the parliament building, main post office, national museum and opera house. Your tour next takes you past beautiful Töölö Bay, a park in the heart of Helsinki. View the monument built to honour of Finland's most famous composer, Jean Sibelius, and continue to the market square where your private boat takes you on a mini cruise around the islands outside Helsinki. With approximately 330 islands, Finland has one of the world's largest archipelagos. Some of the islands were used for defensive purposes during the Viking era, but now they have a very different function. Most are used for leisure, with locals and tourists alike visiting them to escape city life. See old villas and other island homes, and pass giant icebreakers resting at anchor while your guide tells you about Helsinki's fascinating history. The cruise ends at the market square, where you have free time before returning by coach to your ship.



This tour normally involves walking approximately 500 yards on level ground, but, owing to parking restrictions, the coach drop-off point is subject to change and additional walking over cobblestones may be required. Walking during your free time is at your discretion. The boat trip lasts for approximately 1½ hours and WC facilities are available on board.

An Overview of Helsinki

2 ½ hours



Uspenski Cathedral

The charm and style of the ‘White City of the North’ awaits you on this popular tour of Helsinki. The city’s focal point, Senate Square, with its fine 19th-century neoclassical buildings and the impressive Lutheran Cathedral of St Nicholas will be your first stop. Along the way, you pass the red-brick Orthodox Uspenski Cathedral and the North Harbour, where the icebreaker fleet is stationed. After a stop in the square to see the cathedral and the Sederholm Residence, continue on foot to the market square, located on the waterfront. You may visit the market hall on your own, where you will see wonderful stalls of cheeses, fish and other delicacies. Re-joining your coach, drive past the presidential palace and beautiful Kaivopuisto Park, where many of the foreign embassies are situated. Stop to admire the massive, stainless-steel Sibelius Monument, dedicated to the musical achievements of Jean Sibelius, which is situated in Sibelius Park. Your coach will also take you past the new opera house, Finlandia Hall, the parliament buildings, the National Museum and the impressive central railway station, dating from 1919, before arriving back at your ship.



You should expect to walk about half-a-mile, with a few steps and cobblestones to negotiate. However, if you remain on the coach during the stop at the Sibelius Monument, you may reduce the walking to about 400 yards. Walking at the Market Hall is at your discretion. Comfortable walking shoes, sunscreen and insect repellent are recommended. Credit cards are not always accepted by traders, and there is a charge of €1 to use public conveniences, so we recommend that you bring some change in euros. This tour does not include a visit to the Rock Church.

St Petersburg, Russia

This relatively young city has packed a lot into its 300 years. You can learn about the October Revolution of 1917 and chart the periods of change faced by Russia during the 20th century as it forged a new path in the Soviet era. The city is often referred to as the ‘Venice of the North’ as it has many bridges over the River Neva, an important artery of the city. Please note that anyone joining one or more of Saga’s organised shore excursions from St Petersburg does not need to obtain a visa, as Saga arranges group visas for all participants. Group visas also cover passengers using Saga’s bespoke car service. The duration of all tours is subject to change according to traffic conditions. Many thousands of visitors come to St Petersburg in the spring and summer months, and attractions can become very crowded.

FACTFILE

Population: 5,000,000 (approximate)

Language: Russian

Currency: Rouble

Time difference: UK+3

Climate: Summers are mild, with a risk of rain at any time.

Ship berths at: English Embankment, Lieutenant Schmidt Embankment or Marine Façade, Port of St Petersburg

Distance from centre: 3 miles (Marine Façade). English Embankment is centrally located.

USEFUL INFORMATION

Shopping: The main shopping streets are Nevsky Prospect, Sadovaya Ul and Moskovsky Prospect. There are also shops at the Cruise Terminal.

Shop opening hours: Most shops are open from 1000-2000 daily.

Post office: Post boxes are available in the Cruise Terminal.

Banks: There are banks all over the city, and ATMs at the Cruise Terminal. If you intend to use your debit card in Russia, we recommend that you inform your bank before the start of the cruise.

Tourist office: The main tourist office is on 14/52 Sadovaya Street. Limited tourist information is available at the Cruise Terminal.

How to phone home: For the UK dial 0044 and the full STD number, omitting the first zero.

Emergency services: Dial 112.

Going ashore in St Petersburg

Passport and Visa Requirements

Passengers joining Saga's organised shore excursions from St Petersburg do not need to obtain a visa as Saga will arrange a group visa for all participants. However, should you wish to go ashore on your own, then you will need to be in possession of an individual visa. Private tours are available, which do not require a separate visa application. For further information, please see the Exclusive Bespoke Car Service. Passengers must carry their passport at all times as you have to pass through Immigration when leaving and returning to the ship.

Queues

St Petersburg is an undoubted highlight of any Baltic cruise, with a wealth of treasures that attract visitors from all over the world. Attractions such as the Hermitage, Peterhof and Catherine Palace can be very busy and queues are therefore inevitable and unavoidable at most venues. Tour guides do their best to keep groups of passengers together, and give a commentary that is audible to all. In the Hermitage and some of the Imperial palaces you may have the use of headsets in order to better hear the guide. Coats, large bags and bottles of water are not permitted inside most museums or historic buildings: these can be left in cloakrooms during your visit, although you may need to queue when depositing and retrieving them.

St Petersburg Cathedral



Traffic

Our tour programme has been carefully planned to allow you to take a variety of excursions during your stay in St Petersburg. Traffic congestion is on the increase and you may experience delays travelling to and from the ship. For this reason we recommend that rather than taking two separate half-day tours, you consider taking a full-day excursion, in order to maximise your time at the various attractions, with the opportunity to enjoy lunch in a local restaurant. If you chose to combine two half-day tours, we cannot guarantee that you will have time for lunch on board ship. The busy traffic in St Petersburg can make it difficult for coach drivers to find safe places to stop, which can result in additional walking between the coach and museums or churches, adding considerably to the overall walking distance on a tour. To avoid traffic congestion on the day, coach drivers and guides may vary the order in which visits are made.

Photography

Many museums and places of interest in St Petersburg impose a charge for taking photographs or using camcorders. In some places, photography is prohibited. If your chosen excursion includes admission to the Spilled Blood Cathedral, the Peter & Paul Fortress, the Catherine Palace, St Isaac's Cathedral or the Menshikov Palace, then a permit, if required, will be included in the cost of the tour. Permission to take photographs or to use camcorders inside the Pavlovsk Palace, Yusupov Palace, Menshikov Palace, the Railway Museum and any other churches or cathedrals may be arranged locally on the day. The cost will be advised on board, and can be charged to your on-board account. Photography is prohibited inside the palaces at Peterhof, in the Kazan Cathedral and in the Amber Room at the Catherine Palace. Please ask your guide on the day if you are uncertain of the regulations. Use of flashes, selfie sticks and tripods is generally prohibited. Photographs must not be taken in the port area, or of any uniformed officials.

Tour contents

Some of our tours in St Petersburg follow similar routes and visit museums or churches also seen on other tours. Please check the descriptions carefully when booking if you wish to avoid content duplication.



Enjoy the opulence of Peterhof Palace

Useful Information

Comfort stops may be limited on tours, and therefore queues should be expected at public conveniences. These are free of charge in museums, but there is often a charge elsewhere: Rouble or Euro coins are normally accepted. Owing to local regulations, WC facilities are not available on coaches. The weather in St Petersburg is very changeable, somewhat like that in the UK, and you should plan your day accordingly, bearing in mind that on some tours you will be spending a great deal of time out-of-doors. We recommend that you bring insect repellent and sunscreen, in addition to a waterproof coat or jacket or an umbrella: these can safely be left on the coach during visits if they are not required. Many historic buildings and churches are still undergoing restoration after long periods of neglect during the Soviet era, so do not be surprised if some are obscured by scaffolding. Conservative dress should be worn when visiting Orthodox churches and cathedrals, and a headscarf is recommended for ladies: this does not apply to the Spilled Blood Cathedral, which is no longer used for worship.

The famous Fabergé Eggs of St Petersburg



Bespoke Car Service

Take advantage of our exclusive Bespoke Car Service in St Petersburg, perfect for independent travellers. After disembarking, set off with a driver and local guide and see the sights in privacy and comfort, all at a pace that suits you. The price is per vehicle, not per person, and includes the services of a driver and English-speaking local guide, unlimited mileage (unless stated otherwise), road tolls and parking fees. This service is ideal for passengers with restricted mobility, as your tour can be as gentle or fast paced as you wish. Please note that for private guided tours of the Gold Room in the Hermitage, an additional charge of approximately £159 will apply, and an additional charge of around £229 for private guided tours of the Fabergé Museum. To book this service, please go to the Tours and Travel Office on embarkation.

Car for 1-2 passengers - Half-day (4hrs)

Including entrance fees to one museum plus photo and video fees. Cost £240

Car for 1-2 passengers - Full-day (8hrs)

Including entrance fees to two museums plus photo and video fees. Cost £450

Extra Hours - £60 per hour

Small van for 3-7 passengers - Half-day (4hrs)

Including entrance fees to one museum plus photo and video fees. Cost £350

Small van for 3-7 passengers - Full-day (8hrs)

Including entrance fees to two museums plus photo and video fees. Cost £660

Extra Hours - £85 per hour

Large van for 8-12 passengers - Half-day (4hrs)

Including entrance fees to one museum plus photo and video fees. Cost £520

Large van for 8-12 passengers - Full-day (8hrs)

Including entrance fees to two museums plus photo and video fees. Cost £990

Extra Hours - £125 per hour

A Grand Tour of St Petersburg

17 hours over two days



St Isaac's Cathedral

For those that want to truly immerse themselves in all that St Petersburg has to offer across two days.

Day one starts with a drive through Basil Island, across the Malaya Neva, and past the Peter and Paul Fortress. Crossing Trinity Bridge, you have a fine view of the Spit of Basil Island. After a photo stop, continue to the Hermitage, the crown jewel of the city's museums. Founded in 1764 to house Catherine the Great's private collection, today it is Russia's largest art museum, occupying four buildings. After a two-hour foot tour of the highlights, re-join your coach for a ride to Fine Arts Square, near Nevsky Prospect, where you will be given some free time. Afterwards your guide will take you to the Spilled Blood Cathedral, built where Emperor Alexander II was mortally wounded, with its beautiful mosaics that cover much of the interior and exterior. Another magnificent church follows: St Isaac's Cathedral. It is filled with hundreds of impressive 19th-century works of art. From here you head underground for a short subway ride, glimpsing some of the beautiful metro stations. Your destination is Kuznechny market, which sells mainly foodstuffs. Your coach meets you here and takes you back to the ship via Nevsky Prospect, the city's main shopping street.

Day two begins with a drive to the magnificent Catherine Palace, built in 1752 for Empress Elizabeth. Walk up the Grand Staircase to the State Apartments with their mirrors, gilded carvings and painted ceilings. Of special interest is the Amber Room, originally presented to Peter the Great in 1717. The original amber panels were looted by the Nazis during World War II. Your visit concludes with a walk in the park. Afterwards, stop for lunch at a local restaurant before continuing to another royal residence: Peterhof, commissioned by Peter the Great as a Russian Versailles. Enjoy a tour of the stunning formal baroque gardens with

their unique gravity-fed fountains designed by the Russian engineer Tuvolkov. From the terrace by the north façade, enjoy splendid views of the Lower Park, which covers an area of about 250 acres, and the sea. The focal point of the gardens is the Grand Cascade, fed by the underground springs, and in front of this is the Samson Fountain. From here, the water flows along a straight canal out into the sea. After exploring the grounds with your guide, take a hydrofoil for an exciting 45-minute ride back to the city centre, from where your coach takes you back to the ship.

SMALL GROUP TOUR: You can also choose to take this tour as part of a small group with no more than 10 participants. The tour content remains the same. Please see the price list for further details.



On the first day you should expect to walk approximately 1½ miles, with 80 steps at the Hermitage and occasional steps elsewhere. On the second day, expect to walk two miles, with over 100 steps. This tour involves a large amount of walking and standing. You must be able to keep up with the guides. Comfortable shoes are essential. On the first day a packed lunch will be provided by the ship.

Chariot of Victory Arch



City Highlights and Neva River Cruise

4 hours



Get a close view of the battle cruiser Aurora

Start this tour with a drive through Basil Island, the oldest residential area of St Petersburg. Crossing the Malaya Neva, drive past the Peter and Paul Fortress, where construction work on the city started in 1703. As you cross Trinity Bridge, you have a fine view of the Spit of Basil Island and the Field of Mars park. Your first photo stop is at the Spilled Blood Cathedral. This beautiful old Russian-style church stands on the spot where the Tzar Alexander II was assassinated in 1881. From here, drive along the city's main avenue, Nevsky Prospect, to a pier on the River Neva, where you board your riverboat for a fascinating trip past some of St Petersburg's most beautiful buildings. See Peter the Great's Summer Garden - fenced off from the Neva by a black and golden grille - and the lovely Marble Palace, a present from Catherine II to her favourite Grigory Orlov. View the magnificent Winter Palace, where the Tsars lived from 1764 until 1917, and pass close to the battleship Aurora, which fired the first shot of the 1917 Revolution. Following your boat ride, your coach takes you to Spit of Basil Island, flanked by the two Rostral Columns. Your tour concludes with a photo-stop at St Isaac's Square, where you can view the magnificent St Isaac's Cathedral, a monument to Tsar Nicholas I, the Legislative Assembly Building and the famous Hotel Astoria.



You should expect to walk at least half a mile. There are 12 steps at the piers when embarking and disembarking the boat. Participants must be able to board unaided and climb up 14 steps if they wish to reach the open upper deck. Boats have inside and outside seating; if you choose to sit inside, a window seat cannot be guaranteed. The guide's commentary may be harder to hear if you sit outside. All buildings are viewed from the exterior only.

Royal Palaces and Parks of Peterhof

8 ¼ hours



Enjoy the opulence of Peterhof Palace

Spend a day at beautiful Peterhof, the summer residence of the Russian tsars. Arriving via the Upper Park, this excursion starts with a guided tour of the Grand Palace. Originally built in the early 18th century, it was remodelled between 1747 and 1756. Your tour of this glorious palace shows you the state apartments, the dancing hall and several rooms designed by Rastrelli. The White Dining Room displays a Wedgwood dinner service, and Peter the Great's oak study has survived unaltered. Leaving the palace, descend to the Lower Gardens, with their pavilions, 150 fountains and four cascades - all overlooking the Gulf of Finland. After a stop for lunch, a short coach ride takes you to two newly-restored and stunning pavilions, built by Emperor Nicholas I. The Tsarina's Pavilion was designed in the style of ancient Greece, with an original mosaic floor and marble statues. Olga's Pavilion is, in contrast, decorated in the style of 18th-century Italy, with a more modest interior. Despite being almost completely destroyed during the Second World War, the pavilions have certainly been restored to their former glory. After passing back in time, return to the ship.



This tour involves walking approximately two miles, some of which is over uneven ground and cobblestones. There are 100 steps up to the Grand Palace, although a ramp is also available. There are 60 steps at the Cottage Palace. Photography is prohibited inside the palaces. Large bags, coats and bottles of water cannot be taken inside: they may be left in a cloakroom, but you may need to queue when depositing and retrieving them. Rooms may be closed without prior notice. A charge is made for the use of public conveniences: rouble or euro coins are normally accepted.

Hermitage and Gold Room

4 hours



Discover the treasures of the Hermitage

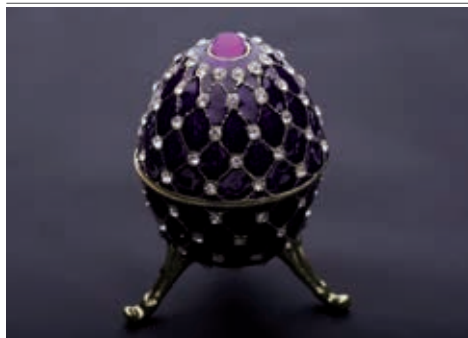
See one of the world's greatest jewellery collections on this excursion to the fabulous Hermitage Museum. The State Hermitage is Russia's most famous museum, founded in 1764 by Catherine the Great. Originally her own private museum, the Hermitage has a collection of around three million works of art. Occupying the Winter Palace, which comprises the Small, Old and New Hermitages, your tour will take you to different parts of the museum including the State Apartments and the Throne Room in the Winter Palace. The highlight of this tour is a visit to the Gold Room. Assembled over two centuries, this significant collection includes jewellery dating from the period of the Scythians and Ancient Greeks up to the 19th century, together with works by renowned jewellers including the world-famous Peter Carl Fabergé.



This tour involves walking roughly 1¼ miles over even ground, plus approximately 125 steps. Cameras and camcorders are not permitted in the Gold Room. This tour follows a similar route to 'A Taste of the Hermitage'. Large bags, coats, jackets and bottles of water may not be brought into the Hermitage: they may be left in a cloakroom, but you may need to queue when depositing and retrieving them. Rooms may be closed without prior notice, for renovation or for government meetings. Please note that the Hermitage is not air-conditioned.

Fabergé Museum

3 hours



A Fabergé egg

One of St Petersburg's newest attractions, the Fabergé Museum, opened in 2013 in the Shuvalov Palace, an elegant 18th-century neoclassical mansion. It contains over 3,000 exhibits, including approximately 1,500 works by Peter Carl Fabergé. This renowned jeweller created the first of his famous eggs in 1885 as an Easter gift from Tsar Alexander III to his wife. This started a tradition that lasted until Tsar Nicholas II was overthrown in 1917. Although Fabergé is now best known for his eggs, his company produced a wide range of other beautiful items, ranging from silver tableware to fine jewellery. By 1900 Fabergé was the largest jewellery business in Russia, with branches in Moscow, Odessa, Kiev and London. The museum is the brainchild of Viktor Vekelsberg, one of Russia's wealthiest men, who bought numerous Fabergé masterpieces from the private collection of Malcolm Forbes, the American publisher who died in 1990. The museum has nine of the famous 'Imperial' eggs, including the first of them all, the Hen Egg. When opened, this reveals a 'surprise': a golden yolk containing a tiny gold hen. Also on display is the Imperial Coronation Egg, made in 1897 to commemorate the coronation of Empress Alexandra Fyodorovna. After a tour of this remarkable collection, you have time to browse in the gift shop - where replica Fabergé eggs are on sale - before returning to the ship.



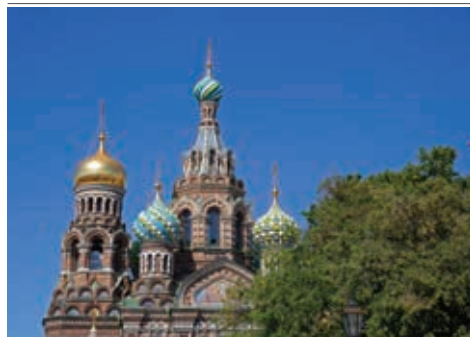
Limited availability

Something different

You should expect to walk approximately 800 yards, with a flight of 40 steps up and down (however there is an elevator). The museum visit lasts around one hour. Photography is permitted. Exhibits may be removed for loan to other museums or for conservation without prior notice. The museum gift shop accepts only Roubles or credit / debit cards.

Glimpse of St Petersburg - Part 1

3 hours



The unmistakably ornate buildings of St Petersburg

This panoramic tour starts with a drive along the embankment to Decembrists' Square, dominated by the 'Bronze Horseman' monument to Peter the Great. Photo stops will be made at St Isaac's Square, the St Nicholas Naval Cathedral and the Cathedral of the Spilled Blood. See a more contemporary side of the city's life next, as you drive along the boulevard of Nevsky Prospect, the city's main avenue, to view the impressive Kazan Cathedral. Inspired by the architecture of St Peter's Basilica in Rome, this was intended to become the country's main Orthodox church. Your drive continues past Palace Square, the Alexander Column, the Admiralty and the Hermitage - home of the largest museum in the world - before bringing you back to your ship.



All sightseeing is from the coach. Any walking at photo stops is entirely at your discretion.

Glimpse of St Petersburg - Part 2

3 hours



The Bronze Horseman Monument

This panoramic tour starts with a short drive to the historical centre of the city. Your first photo stop is by the Academy of Fine Arts and the 3,500-year old Sphinxes on the Neva River embankment. Continue past the St Petersburg State University and the Rostral Columns - these studded beacons flank the white colonnaded Stock Exchange and once served as navigational beacons. Stop to photograph the beautiful panorama of the Neva River and the Peter and Paul Fortress. You next stop at the pavilion that encloses the Cabin of Peter the Great. The cabin was constructed for the Tsar in 1703 and used by him while he supervised the construction of the new city and the Peter & Paul Fortress. He had it encased for its protection inside the red-brick pavilion in 1723. After a short stop for souvenir shopping, continue your tour with a photo stop at the Smolny Convent of the Resurrection: this stunning blue-and-white church with its numerous domes and bell-towers is one of the masterpieces of the Italian architect Rastrelli, who also designed the Winter Palace, Catherine Palace and the Grand Palace in Peterhof.



All sightseeing is from the coach. Any walking at photo stops and at the souvenir shop is entirely at your discretion.

Visions of St Petersburg

7 ½ hours



Smolny Convent of the Resurrection

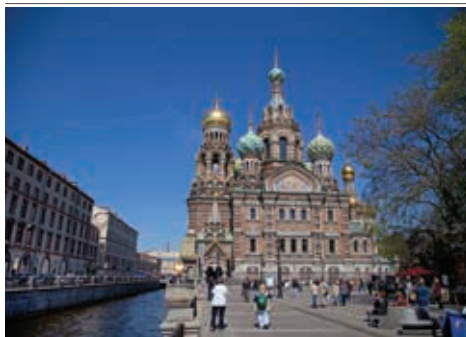
Start with a short drive to the city's historical centre, passing the Academy of Fine Arts, the State University and the Rostral Columns, which flank the white colonnaded stock exchange and once served as navigational beacons. Photo stops will be made overlooking the River Neva, at the Peter & Paul Fortress and at Peter the Great's first home in the city. Now enclosed by a brick pavilion, this small log cabin was erected in 1703 and occupied by the tsar while he supervised the construction of his new city. Next you continue to the Spilled Blood Cathedral. Built on the spot where Tsar Alexander II was assassinated in 1881, this magnificent church was reopened as a museum in 1997 after 25 years of restoration. Its exterior is a riot of colour with its onion domes of varying heights and sizes. After lunch in one of the city's restaurants, you have another opportunity to appreciate the splendid architecture of this beautiful city as you cruise along the Moika and Fontanka Rivers. Conclude your tour by pausing at the Smolny Convent of the Resurrection, a stunning blue-and-white church built by the Italian architect Rastrelli.



You will need to walk approximately 600 yards, with about ten steps down to the boat from the pier. Further walking may be required. Depending on the tide, there may also be a steep gangway to negotiate. Participants must be able to get onto the boat unaided. The route taken by the boat may vary, depending on the water level in the canals. Comfortable shoes are recommended, and you should be prepared for changeable weather. There are very limited WC facilities on board the boat, and a charge is made for those at the cathedral. Dietary requests must be advised to the shore excursion manager on board ship at least 72 hours prior to arrival. The order of venues visited may vary.

Spilled Blood Cathedral and Canal Cruise

3 ½ hours

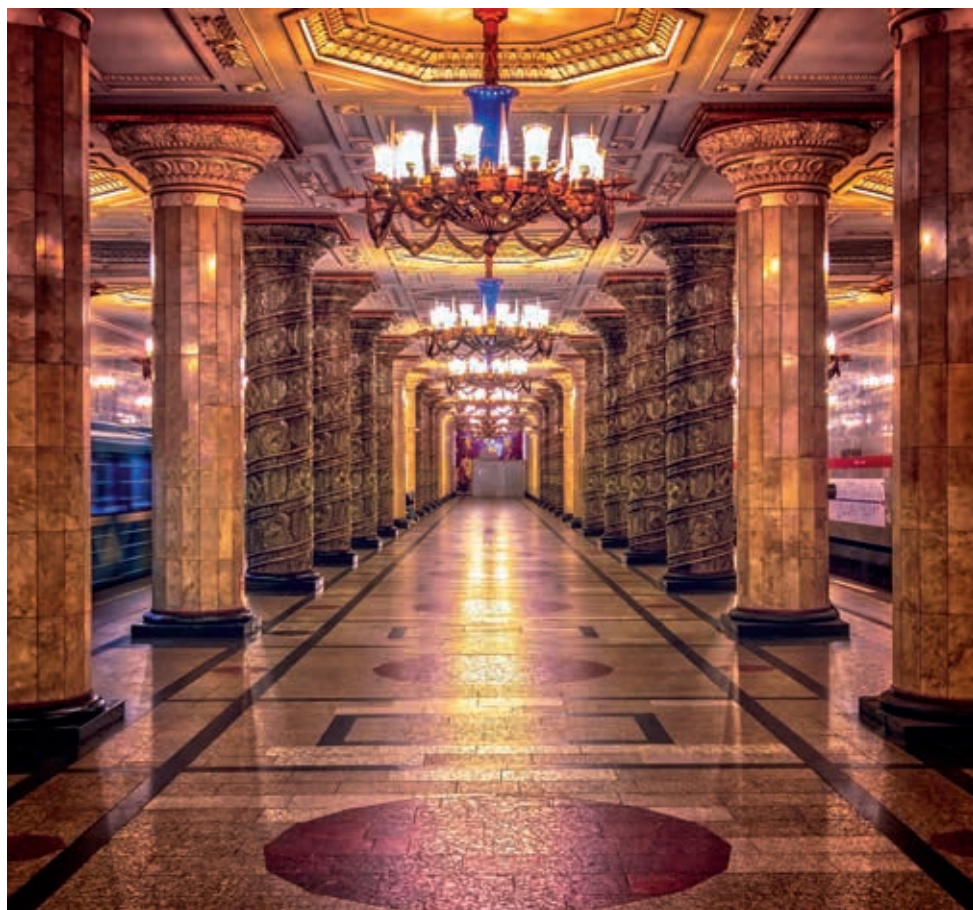


St Petersburg's Church of the Saviour on Spilled Blood

St Petersburg is built around some 185 miles of canals and rivers, which act as mirrors in which the city's neoclassical mansions, golden-domed churches and palaces are reflected. Peter the Great intended the rivers and canals to form part of his whole architectural ensemble, so that, unlike those in Paris and London, most buildings have their main façades facing the waterways. A cruise along the Neva, Fontanka and the Moika rivers is therefore a highlight of any visit to St Petersburg, as from the river you will see much of the city's magnificent architecture. The tour also visits one of Russia's most beautiful churches - the Spilled Blood Cathedral. One of the finest examples of the Russian revival style, this magnificent cathedral was built on the spot where Tsar Alexander II was assassinated on March 1, 1881. The interior and exterior are a riot of colour, with richly-decorated onion domes on the outside and intricate mosaics within. After the October Revolution in 1917 it was closed to the public for many years, re-opening as a museum in 1997 after 25 years of restoration.



Depending on the tide, there may be a steep gangway to negotiate, and it is sometimes necessary to walk across other boats before reaching the vessel allocated to your cruise. Participants must be able to get onto the boat unaided. The route taken by the boat may vary, depending on the water level in the canals. Comfortable shoes are recommended, and you should be prepared for changeable weather. There are very limited WC facilities on board the boat, and a charge is made for those at the Spilled Blood Cathedral. You will have a short amount of time in a souvenir shop, but credit cards may not be accepted.



St Petersburg's lavishly decorated underground

Local Life in St Petersburg

4 hours

Discover what local life looks like away from the tourist destinations, and learn the many secrets of a metro system that carries an estimated 2.5 million passengers each day. Known as 'the palace of the people', St Petersburg's metro system is filled with neoclassical splendour fit for the tsars themselves. The imperial ruling class had huge stately homes above ground, however the USSR ensured that Russian art was preserved for the people below. Opened in 1955, during the build up to the USSR-USA Cold War, some stations were built as deep as 300 feet below ground level, to double as a nuclear shelter - should the threat of war materialise. During your tour of this subterranean paradise, see the extravagant artwork, marble pillars and mosaics, before walking

to Kuznechny Market, reputed for selling the best fruit, vegetables and meat in St Petersburg. Sample the produce on offer before driving to Nevsky Prospect, a street that cuts through the city's historic centre. This street is a key shopping district and offers an excellent opportunity to pick up some souvenirs. Enjoy some free time on Nevsky Prospect before returning to the ship.



S

New

Something different

On the guided part of this tour, there will be at least one mile of walking across flat, sometimes uneven terrain with frequent steps.

Backstage at the Ballet

2 ½ hours



The facade of the theatre pales in comparison to the extravagance within

On the 18th December 1892 at the Mariinsky Theatre, an excited audience was full of anticipation, ready to watch the very first performance of *The Nutcracker*, featuring the music of Pyotr Ilyich Tchaikovsky, and choreographed by Marius Petipa and Lev Ivanov. Today, embark on an intimate and completely exclusive tour unlike any other. Hosted by a member of the theatre staff, enjoy a personal exploration of this world-famous venue. Visit usually closed areas such as the stage, the royal box, the theatre workshops or costume storage rooms (depending on the ballet rehearsal schedule), to get an insight into the world behind the curtain of such a prestigious theatre. Furthermore, learn about the complex machinery and engineering devices that ensure shows are visually breath-taking and discover the skills required for costume care. Mariinsky is a stage that has been graced by ballet performers such as Anna Pavlova and Rudolf Nureyev and allowed singers such as Fyodor Chaliapin and Nikolai Figner to hone their skills and rise to operatic fame. Enjoy an exclusive guided tour of this fascinating theatre before returning to the port, perhaps still filled with some of *The Nutcracker's* magic.



M

New

Something different

Please note that the sites seen at the opera house will vary depending on the ballet rehearsal schedule. There will be approximately 550 yards of walking involved on this tour and at least 40 steps to negotiate.

Exclusive Hermitage Experience

4 hours



Enjoy the Hermitage when the public has gone home

To revive a tradition started by Catherine the Great, who opened her residence to friends and foreign guests, we are happy to offer you a unique opportunity to visit the Hermitage in the evening, avoiding the usual crowds. Your guide takes you first to the museum's diamond display. It has taken over two centuries to assemble this unique collection of jewellery by Russian, European and Oriental artists and craftsmen. Known as the Treasure Gallery in the days of Catherine the Great, the jewellery collection includes a significant number of archaeological finds, including famous Scythian and Greek gold artefacts. You next climb the stairs to the Top Lighted Hall for a concert played exclusively for you by the State Hermitage Orchestra. This is followed by the tour of the main collections. Walk through the magnificent state apartments: the Field-Marshal's Hall, the Small Throne Room, the Emblem Hall with its vast gilded columns, the Gallery of 1812 displaying portraits of Russian military heroes, and the Hall of St George, decorated with Carrara marble and gilt bronze with a parquet floor. At the end of the tour, pause for a glass of Russian sparkling wine before returning to your ship.



S

Limited availability



This excursion involves walking at least one mile with about 80 steps. The Hermitage will be closed to the general public, but the museum reserves the right to admit other small groups. This tour duplicates much of the content of 'A Taste of the Hermitage' and other tours visiting the Hermitage. Coats, jackets and water bottles must be left in a cloakroom. Rooms may be closed without prior notice, and the route of the tour is decided by the curators, so we cannot guarantee which works of art will be seen on the day.

Enchanting Ballet in St Petersburg

4 ¼ hours



Ballet: the ultimate in grace, strength and control

St Petersburg is famous for its rich theatrical life, which originated more than two and a half centuries ago. Like the city itself, the art of Russian ballet has incorporated foreign traditions and gradually developed its own world-renowned style. The Tsars and aristocrats took a great interest in ballet, encouraging and supporting the construction of theatres. In days gone by, many noblemen also had private theatres on their estates, so ballet became an integral part of Russian cultural tradition. Brilliant choreographers such as Marius Petipa and Mikhail Fokin staged ballets in St Petersburg, and many famous ballet dancers have performed in the city - Anna Pavlova, Vaslav Nijinskij, Olga Spesivtseva, Galina Ulanova and Rydolph Nureyev - to mention just a few. World-famous composers such as Tchaikovsky wrote heavenly music to accompany ballet performances. This wonderful tour affords you the opportunity to experience a memorable and extraordinary live ballet performance in one of the city's great theatres. Arriving at the venue, you will be supplied with a programme and escorted to your seat. Russian sparkling wine will be served during the interval. Following the performance, you will be taken directly back to the ship.



Limited availability

The specific performance and venue will be announced on board the ship. Smart casual clothing is recommended for the performance. Photography, filming and sound recording is not permitted. You may need to walk up to 500 yards between the coach and theatre and back again, and there are likely to be a few steps to the entrance plus a flight of stairs leading to the auditorium: some venues may have a lift. All theatres have public conveniences. The actual duration of the excursion will depend on the ballet performed.

An Evening Cruise on St Petersburg's Waterways

2 ¾ hours



Cruise St Petersburg's Waterways

St Petersburg - the 'Venice of the North' - is built around a network of canals and rivers. They contribute to the city's unique atmosphere, creating a mirror in which the magnificent architecture is reflected. A canal cruise is an ideal way to appreciate the history and fine buildings of this beautiful city. Your boat will pass many of the city's attractions including St Michael's Castle, the Spilled Blood Cathedral and numerous mansions once belonging to the Russian nobility. Once on the Neva River, admire this wide natural waterway. Enjoy the city's stunning waterfront: the spit of Vasilyevsky Island with its red Rostral columns, the Peter and Paul Fortress, the stately ducal palaces on the left bank of the river, the Marble Palace and the lovely blue domes of the Great Mosque. Your boat also passes the Summer Palace and Summer Gardens laid out by Peter the Great. One glass of local sparkling wine or mineral water is included during the cruise.



You will need to walk approximately 600 yards, with about ten steps down to the boat from the pier. Further walking may be required. Depending on the tide, there may also be a steep gangway to negotiate, and there are a few steps between the enclosed and open sections of the boat deck. Participants must be able to get on and off the boat unaided. The route taken by the boat and duration of the cruise may vary, depending on the water level in the canals: the boat may follow a similar itinerary to the 'Spilled Blood Cathedral and Canal Cruise' tour. There are very limited WC facilities on board the boat.

Catherine Palace at Tsarskoye Selo

4 ½ hours



The extravagant Catherine Palace

This excursion starts with an hour-long drive to the town of Tsarskoye Selo, to reach a masterpiece of world architecture: Catherine Palace. This lavish building, with its baroque façade over 1,000 feet in length, originated in 1717 as a modest summer residence for Empress Catherine I. In 1752 Empress Elizabeth asked architect Bartolomeo Rastrelli to rebuild the palace on a much grander scale, and the present magnificent Rococo structure was inaugurated four years later. More than 200 pounds of gold leaf was used to decorate the exterior and the numerous statues on the roof. When Catherine the Great came to the throne in 1762, she employed the Scottish architect James Cameron to redecorate parts of the interior. A guided tour shows you the opulent state apartments, including the Great Hall, Green Dining Room and the exquisite Amber Room. Presented as a gift to Peter the Great by King Frederick William I of Prussia, the Amber Room was considered a wonder of the age. It was dismantled by the Nazis during World War II, when the palace was severely damaged, but in 1979 the Soviet authorities started to re-create it, a process that took 24 years. Following your guided tour of the palace, enjoy a walk in the beautiful landscaped gardens before returning to St Petersburg.



The guided tour takes one hour, with at least 45 steps to negotiate. The coach park is approximately 800 yards from the palace, with a few steps along the way. Photography and filming in the Amber Room is prohibited, but is permitted elsewhere. Large bags, coats and bottles of water may not be brought into the palace: they can be left in a cloakroom, but you may need to queue when depositing and retrieving them.

Essence of St Petersburg with Peterhof

9 hours



St Nicholas' Naval Cathedral

The tour starts with a drive along the embankment to Decembrists' Square, dominated by the Bronze Horseman – a statue of Peter the Great. Stops for photos will be made at St Isaac's Square, St Nicholas' Naval Cathedral and at the Cathedral of the Spilled Blood. See a more contemporary side of the city's life next, as you drive along the boulevard of Nevsky Prospect, the city's main avenue, to view the impressive Kazan Cathedral. Based on St Peter's Basilica in Rome, this was intended to become the country's main Orthodox church. Drive past Palace Square and the Alexander Column before stopping for lunch at a Russian restaurant. After lunch, continue to Peterhof – the former summer residence of Peter the Great and his successors. A guide will escort you through the gorgeous Peterhof Gardens, which have 150 fountains, four cascades and ornamental ponds. The water is supplied by a gravity-fed system that exploits the natural slope of the ground: it uses no pumps and supplies enough water to keep the fountains and cascades working for up to ten hours a day.



This tour involves walking approximately two miles, some of which is over uneven ground and cobblestones. There are approximately 71 steps to Lower Garden. A ramp to the Lower Garden is available. All bathrooms inside the park are free of charge. A charge is made for the use of public conveniences at the parking lot: roubles or euro coins are normally accepted.

Splendours of St Petersburg and the Hermitage

9 hours



Impressive St Isaac's Cathedral

After a short transfer from your ship, spend the morning exploring the magnificent Hermitage Museum on a guided tour. Your tour concentrates mainly on the works of European artists from the 14th to the 19th centuries, but you will also be shown other exhibits such as porcelain, pottery, silverware and furniture. See a 21st-century side of the city's life next, as you drive along Nevsky Prospect to a restaurant in the city centre, where you enjoy lunch accompanied by Russian folk entertainment. After lunch, head to Decembrists' Square, dominated by the Bronze Horseman, a monument to Peter the Great. A photo stop at St Isaac's Cathedral brings you to Palace Square and past the Winter Palace. Pause by the Rostral Columns to photograph the beautiful panorama of the Neva River and the Peter and Paul Fortress, where you make your next stop: this fortress and prison was home to a roll call of revolutionaries from Dostoevsky to Trotsky, and within its walls is the Cathedral of Peter and Paul, with its tall, slender spire.



This tour involves a lot of walking, with occasional steps throughout. Walking at the fortress is over cobbles and amounts to about 450 yards. A charge applies to use the WC. At the Hermitage there are about 125 steps. The guided tour takes 2½ hours, depending on the size and pace of the group, and involves just over a mile of walking. There is also a lot of standing as your guide will stop to give a commentary on numerous exhibits. Coats, large bags and water bottles are not permitted inside the Hermitage: these can be left in cloakrooms, and you may need to queue when depositing and retrieving them. The Hermitage has the right to close any room without prior notice.

A Taste of the Hermitage

3 ½ hours



Explore the Hermitage

Explore the magnificent halls and staterooms of the elegant Winter Palace on a guided tour. This is home to the world's largest museum – the Hermitage. It was Catherine the Great who founded the museum in 1764 as a home for her own art collection, but it was not open to the general public until 1852. The collection greatly expanded after the October Revolution in 1917, when many works of art from Imperial palaces were confiscated by the Soviet government and distributed among the country's museums. There are now more than 3,000,000 pieces of art occupying more than 1,000 rooms. This must-see attraction is housed in four separate buildings: the spectacular Winter Palace, Little Hermitage, the Old Hermitage and the New Hermitage; two other buildings are used for storage, as only a small proportion of the exhibits can be displayed at any one time.



There is just over a mile of walking inside the Hermitage, with approximately 125 steps. This tour is designed to cover a lot of ground, and you should be prepared to remain standing for long periods while your guide gives a commentary. The museum is extremely popular and can become very crowded. Coats, jackets and bottles of water may not be brought into the Hermitage: they may be left in a cloakroom, but you may need to queue when depositing and retrieving them. Rooms may be closed without prior notice, for renovation or for government meetings. The Hermitage is not air-conditioned. Please note that this tour does not include a visit to the Gold Room, or to the General Staff Building where the French Impressionist collection is on display.

Peterhof Parks and Fountains

4 hours



Explore the beautiful Peterhof Gardens

Start with a one-hour drive to the gardens of Peterhof Palace, 18 miles from St Petersburg. The former summer residence of Peter the Great, it was originally commissioned to be a 'Versailles by the Sea', and Peter's plan was certainly brought to fruition as it has been declared a UNESCO World Heritage Site. The layout of the 300-acre park includes the Great Cascade, fed by underground springs, and accompanied by waterfalls, fountains and gilded statues. Take a stroll around the Lower Park, which contains numerous fountains, the largest of which represents Samson rending the jaws of a lion - symbolising Russia's victorious struggle over Sweden in the Northern War. The Peterhof Fountains are considered to be the most impressive in the world. From the Lower Park, make your way to the Grand Palace Terrace, from where you get a wonderful panoramic view. Following your tour of the gardens, return to St Petersburg by coach.



This tour involves walking approximately two miles, some of which is over uneven ground and cobblestones. There are approximately 71 steps to the Lower Garden. A ramp to the Lower Garden is available. All bathrooms inside the park are free of charge. A charge is made for the use of public conveniences at the parking lot: roubles or euro coins are normally accepted.

St Petersburg Cathedrals

4 hours



Inside the Spilled Blood Cathedral

The tour starts with a visit to the magnificent St Isaac's Cathedral in St Isaac's Square. Built between 1818 and 1858, the cathedral was designed by French architect August Montferrant and is named after St Isaac of Dalmatia. The vast, opulent interior covers 43,000 square feet and is filled with hundreds of impressive 19th-century works of art. At St Isaac's Square you also see the St Petersburg Legislative Assembly, the famous Hotel Astoria and a monument to Tsar Nicholas I. Next, visit the Kazan Cathedral, constructed by Russian architect Andrei Voronkhin and an outstanding example of early 19th-century Russian architecture. The building encircles a small square with a double row of columns that form an impressive colonnade. The cathedral was named after the 'miracle-making' icon of Our Lady of Kazan. Inside the cathedral are 56 red granite monolithic columns and a multi-coloured Karelian marble mosaic floor. Your final visit is to the Spilled Blood Cathedral. This magnificent Russian-styled onion-domed church was built on the spot where Tsar Alexander II was assassinated on March 1, 1881. For many years it was closed to the public, but after 25 years of restoration it opened again as a museum during the late 1990s.



This tour involves walking a total distance of approximately 400 yards, with seven big steps at the entrance to St Isaac's, about ten steps at the Kazan Cathedral and five at the Spilled Blood Cathedral. Photography is not permitted inside the Kazan Cathedral. A charge is usually made for the use of public conveniences: rouble or euro coins are normally accepted. Conservative dress is required to enter St Isaac's and the Kazan Cathedral, and a headscarf is recommended for ladies.

Tallinn, Estonia

This UNESCO World Heritage Site offers a truly magical experience and has one of the most beautifully preserved medieval centres in Europe. The Upper Town is characterized by watchtowers, graceful spires and winding cobbled streets, while the Lower Town offers red gabled roofs and soaring spires. The golden era in Tallinn's history came in the period between the early 15th and mid 16th centuries when the city attained fame and a powerful role in the Baltic Sea area through its membership of the Hanseatic League.

FACTFILE

Population: 400,000 (approximate)

Language: Estonian (a Finno-Ugric language)

Currency: Euro

Time difference: UK+2

Climate: Mild winters and cool summers

Ship berths at: Port of Tallinn

Distance from centre: 1 mile (approximate)

USEFUL INFORMATION

Shopping: The majority of the souvenir shops, art and handicraft markets are located within the Old Town walls. There is a small craft market in the cruise harbour situated at pier 24-25, normally open when cruise ships are in port

Shop opening hours: Most shops are open from Monday to Friday between 0930-1800 and Saturday between 1000-1700. The arts and crafts market is open on Sunday

Post office: Located at 1 Narva Street and open from Monday to Friday between 0900-1800 and Saturday between 0900-1500

Banks: The nearest ATM is in the Passenger Terminal located 550 yards from the cruise harbour. There are numerous banks in the Old Town open from Monday to Friday between 0900-1800

Tourist office: The nearest tourist information centre is located near the Town Hall Square, Niguliste 2/Kullassepa 4

How to phone home: To call the UK dial 00 44 followed by the full STD number, but omitting the first zero

Emergency services: Dial 112

Tallinn Old Town Walk

3 ½ hours



The picturesque Old Town of Tallinn

Discover the highlights of Tallinn Old Town, a UNESCO World Heritage Site, on foot. Making your way into the Old Town, leave your coach in the Upper Town and see the castle, the Russian Orthodox Church of Alexander Nevsky and the 13th-century Gothic Dome Church. From the terraces of the Upper Town, there are magnificent views across the gabled rooftops and soaring spires. Stroll along Long and Short Leg Streets to the 15th-century Blackheads Fraternity; continue past the Town Hall, Town Hall Square and the 15th-century pharmacy to the medieval guild houses and merchants' residences, before ending your tour at St Catherine's Arts and Crafts Centre. During the course of your walk, stop for an Estonian folk show and refreshments.



Tallinn covers quite a large area, with distances of between 300 and 400 yards between the various sites. Although generally flat, many of the streets have cobblestones, and there are numerous steps. Altogether the tour involves approximately one-and-a-quarter miles of walking.

Tallinn Highlights

3 ½ hours



The historic skyline of Tallinn

Drive through the cultural centre of Tallinn and pass alongside the medieval city walls that encircle the Old Town. Leaving your coach at Nun's Gate, stroll past the Church of the Transfiguration and the 15th-century Blackheads Fraternity House. Your walking tour continues past Pikk Street and across the Town Hall Square, where you can view the Old Town's most important buildings and visit St Catherine's Arts and Crafts Centre. During your tour, enjoy an Estonian folk show and refreshments. Continue by coach along the main thoroughfare towards the central park of Kadriorg, which was founded by Peter the Great and is the setting for the baroque-style Kadriorg Palace. You visit next the Song Festival grounds, where national song festivals are held with some 30,000 singers, and pass through a beautiful residential area on your way to Piritä Marina, the venue for international regattas, which hosted some of the yachting events for the 1980 Olympic Games. You also see 15th-century St Birgit's Convent, the Estonian Russalka Monument - commemorating an 1893 shipwreck in the Gulf of Finland - and the summer residence of Count Orlov, a Russian aristocrat.



There is a 400-yard walk over cobblestones from Nun's Gate to the Fraternity House and a similar distance from the concert back to the coach near Viru Square. Walking at all other venues is at your discretion. Admission to Kadriorg Palace is not included. The Song Festival grounds is subject to closure by the authorities without prior notice at any time. There are 25 stone steps up to the refreshment venue, with a further 14 stone steps down to the WC facilities.

Tallinn and Saue Manor

3 ½ hours



Historic Saue Manor

This delightful tour takes you from Tallinn harbour towards the Old Town, with its picturesque medieval skyline of towers and spires. After driving around the city walls with their massive bastions, stop near the Tall Hermann Tower and walk up to Palace Square to get a glimpse of the exterior of Toompea Palace, now home to the Estonian parliament. You next visit the largest Russian Orthodox church in Estonia, which is named after Alexander Nevsky. Its golden domes and ornate exterior make it stand out among the more sober neoclassical buildings that surround it. Afterwards you travel by coach through the more modern part of Tallinn, with its theatres, concert halls and shopping centres, passing through industrial and residential suburbs before arriving at lovely Saue Manor. This manor house, with its outbuildings, stables and coach house was completed in 1792. Take a guided tour of the manor complex and learn of its chequered past, and then enjoy refreshments followed by a classical music concert. Afterwards, you have free time to take a stroll in the charming grounds, laid out in the English style, before returning to the ship.



Limited availability



Something different

There is approximately 400 yards' walking during this tour, some of which is uphill, with 15 steps at the Alexander Nevsky Cathedral and an additional 18 steps at Saue Manor. Although the pace of the tour is reasonably easy, we have graded it 'Moderate' on account of the steps. Additional walking in the grounds of Saue Manor is at your discretion. This excursion does not include a walking tour of Tallinn Old Town.

The Best of Tallinn

6 ½ hours



Kadriorg Palace and Gardens

Listed as a UNESCO World Heritage Site, Tallinn is a treasure trove of architectural gems and perfectly-preserved medieval structures. Start your tour at the foot of Dome Hill, and after a short walk to Palace Square, view the medieval Dome Castle, followed by Nevsky Cathedral. Nearby are the impressive Kiek in de kok and Maiden Towers, built in the 15th century to protect this vital sea port. Board your coach and pass the medieval wall that encloses the old town before walking to Tallinn's historic centre. Pass along the cobbles of Pikk Street, flanked by the Guildhall and the Church of the Holy Ghost before reaching the Town Hall Square. Named after the 15th-century Gothic Town Hall, this square also features the historic apothecary's shop. After almost two hours of exploration on foot, relax in a charming art nouveau-style restaurant for a light lunch, accompanied by some live guitar music. Afterwards, enjoy some free time at St Catherine's Arts and Crafts Centre, before re-joining your coach to Kadriorg. Walk through this lovely park to Peter's Cottage- residence of Peter the Great when he visited Tallinn. See a wealth of items that belonged to the Tsar before walking through a pleasant tree-lined alley to Kadriorg Palace, for an interior visit where you will find mix of Italian and French baroque styles. Afterwards, board your coach to head to the Song Festival grounds, the site of one of the biggest international choral festivals in the world. A short stop is to be had here before passing a memorial complex dedicated to victims of the Soviet regime and arriving back at the port.



This excursion involves walking about 900 yards, much of which will be over cobbled streets or uneven ground, with at least 20 steps to negotiate. Furthermore there are approximately 40 steps in Kadriorg Palace, but a lift is available.

Estonia's Fight for Freedom

3 hours



See an authentic Russian T-34 tank in action

Throughout the 20th century, Estonia regularly struggled and fought for its freedom against much more aggressive powers. Between 1918 and 1920, it fought against Soviet Russia and Bolshevik Germany and in June 1940, Soviet forces once again sought to annex Estonia. This oppression led to Estonian guerrilla attacks enacted by the 'Forest Brothers', and the country's resistance continued when Nazi Germany arrived in 1941. It is estimated that approximately 25% of Estonia's population were killed during the Second World War, but its fire of resistance never died. This fascination for resistance is what led Johannes Tors to dedicate his life to collecting artefacts significant to the country's 20th-century history. Today, Johannes personally opens his private collection up to you, offering a window into Estonia's fighting past. See military equipment, cannons, firearms and uniforms belonging to Estonian soldiers who fought and died protecting their homelands. Perhaps the highlight of the collection is a fully-functioning, authentic Russian T-34 tank, which earned a legendary reputation throughout the war. See this ferocious tank in action – maneuvering with such power that it is easy to understand the fear felt by those that faced up against the 'Red Army'. Pass back through picturesque Estonian scenery on your way back to the port.



New

Limited availability

Something different

There will be at least 500 metres of walking on this tour and at least 20 steps to negotiate. This tour is not recommended for those with limited mobility.

A Taste of Tallinn

3 hours



The Alexander Nevsky Church

Drive through the heart of the city towards Cathedral Hill (Toompea), stopping at the Tall Herman Tower, one of the three remaining towers of the Knights of the Sword Castle. From nearby Cannon Tower you can admire the panoramic view of Tallinn's Upper Town, with its numerous churches and spires. The tour continues towards Kadriorg Park and the baroque palace designed as a summer residence for Peter the Great. As you drive through the park, pause at the Song Festival grounds, a natural amphitheatre with a capacity for 150,000 people, which makes a perfect venue for Estonia's national song festivals. Following a drive through a scenic residential area, enjoy refreshments and folk music before continuing on to St Birgit's Convent to see one of the best examples of local limestone architecture in Estonia. Your return journey takes you past the summer residence of Count Orlov, a Russian aristocrat, and the famous Estonian Russalka monument, which commemorates a shipwreck of 1893.



Due to traffic restrictions the coach is unable to drive through the Old Town. There is approximately 165 yards of walking on this tour, with further walking at your own discretion. The Song Festival Ground is subject to closure by the authorities without prior notice at any time.

Tallinn on Two Wheels

3 hours



The pretty skyline of Tallinn

Tallinn has certainly ridden the wheels of prosperity – taking advantage of the maritime protection offered by the Hanseatic League and being a favoured summer destination of Tsar Peter the Great. Today, it is your chance to ride upon the wheels of a modern bike and explore this historically-significant town full of pretty character and modern charm. Starting from the pier, cycle towards Kadriorg Park: a veritable oasis of greenery filled with colour. Here, see the baroque-style palace of Peter and Catherine (now the Museum for Foreign Art), neighboured by the grand, pink façade of the purpose-built presidential palace. Proceed to the administrative district of Pirita and stop at the Song Festival Ground, where one of the largest amateur choral events in the world is held each year. After a short photo opportunity, pass along the seaside promenade which benefits from a beautiful Tallinn panorama to the old town, an area listed as a UNESCO World Heritage Site for having an 'exceptionally intact 13th-century city plan'. Here, cobbled streets wind past medieval churches and luxurious merchants' houses. Cycle to the town's surrounding wall and follow it to the artillery tower known as 'Fat Margaret', a 16th-century construction built to defend the port. Also see the Church of St Olav, the tallest medieval structure in the city: built during the 12th century and struck by lightning 10 times! The last stop on this bike tour is to Town Hall Square – the town's centre since the middle ages. Return to the pier by bike or enjoy some free time before returning to the ship by shuttle bus.



S

New

Limited availability

Something different

While the walking on this tour is minimal, guests need to be proficient cyclists. This tour is not recommended for guests with limited mobility.



Climb aboard your Cold War-era bus

Back to the Soviet Era

2 hours

Enjoy a fascinating look back at life in Tallinn during Soviet times, as you tour the city with an actor who is part militiaman, part comedian. Meet your guide for a ride in his authentic Soviet-era bus, and listen while he shares stories of life in the Soviet Union. At the same time you will enjoy a fascinating overview of Tallinn. Your guide will demonstrate how foreign tourists were welcomed in the former USSR. Listen to typical Soviet propaganda and see the unfinished bridge to Finland, a monument to the Great Patriotic War (World War II). Your bus will pass the jail and drive around the Old Town to the Soviet Monument in Maarjamäe to enjoy the view and have a Soviet-style picnic on the bus, consisting of a pie and a glass of local drink. A shot of vodka

and some pickles are also included. Continue afterwards to Pirita. Here your guide will talk about Tallinn's role during the Olympic Games in 1980.



E

Limited availability

Something different



Most of the sightseeing is from the bus, but there will be some walking at the stops, some of which may be over uneven ground. Please bear in mind that this tour is operated by an authentic historic vehicle offering a genuine vintage transport experience: access is via steep steps. Leg room may be less generous than on most modern coaches, and there are no seat belts or air conditioning. Regrettably this vehicle is not suitable for wheelchair users.

Notes

Notes

Notes

Optional excursions booking conditions

Book in advance: For added convenience and to save queuing on board, you can book your shore excursions in advance by visiting saga.co.uk/managemybooking for immediate confirmation, alternatively you can call our Cruise Consultants FREE on 0800 056 7534 to confirm your choice and make payment.

When booked in advance tickets will be delivered to your cabin when you join your ship.

Cancellations: All excursions may be cancelled without charge at any time before the Tours and Travel Office closes sales for a particular excursion. Please check the ship's Daily Programme for closing time of sales, which is normally 48 hours before arrival in the relevant port unless stated otherwise on the booking form, online and/or in the Daily Programme. If you cancel after sales close, a cancellation fee of 75% is payable. This cancellation fee is waived for those passengers holding Saga's optional insurance and additional cancellations rights if the cancellation is due to illness certified by the ship's doctor. All refunds will be credited to your on-board account. We reserve the right to cancel excursions or to substitute one excursion for another at any time in the interests of the passengers or of the ship, or if there are not sufficient bookings. If we cancel an excursion we will refund your payment.

Please note for certain tours we may incur costs for cancelling the arrangements and therefore a cancellation charge will be applicable. Where appropriate this will be highlighted under the individual tour description.

Clothing: For all shore excursions it is advisable that you wear comfortable, low-heeled walking shoes with non-slip soles and a waterproof and windproof jacket. In anticipation of a variety of temperatures, your wardrobe should be versatile. We recommend wearing layers of clothes which can be shed or added to depending on the weather. A daily weather forecast will be issued to allow passengers to judge the appropriate clothing for that day. Do not forget a camera, film and binoculars. Staff on board will be pleased to offer further advice.

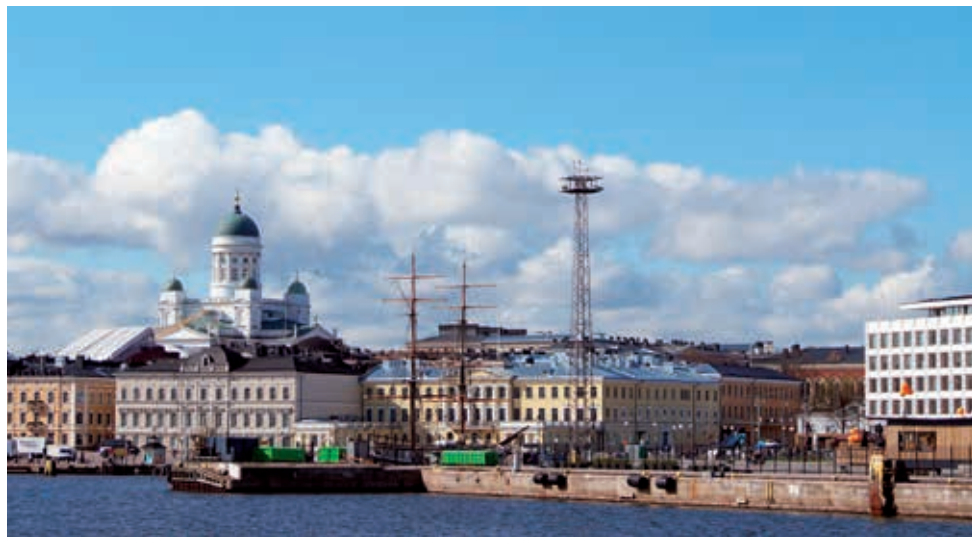
Suitability of excursions: If you have walking difficulties or a disability please refer to the excursion details to see if it is suitable. Staff at the Tours and Travel Office, during shore excursion talks and at the port talks can also advise you about those excursions which you may find more suitable. Please note that the suitability of individual excursions does vary and while we give you advice and guidance, the decision on whether or not the excursion is suitable is essentially for you to make, save where Saga believes the proper operation of the excursion will be prevented or where safety concerns exist.

Disembarkation: Disembarkation takes place as soon as possible after the ship's arrival in port. For safety reasons, please wait in the recommended areas until an announcement is made by staff calling you to disembark for your chosen excursion.

Times and schedules: Durations given for excursions are approximate and should be taken as a guide only. Please check the ship's Daily Programme for confirmed departure times.

Looking down into Gdansk





A panorama of Helsinki

Itineraries: Some excursions may operate in reverse. Please ensure that you do not book excursions which run at the same time. Please refer to the enclosed price list which explains which excursions can or cannot be taken together.

Transport: In some places you may travel on under-developed roads and transportation may not be of British or European standards. However, we do use the best transport available.

Bathroom stops: Wherever possible, regular bathroom stops have been planned into your itinerary at the best facilities available.

Smoking: Saga operates a worldwide policy of no smoking on all excursion vehicles.

Conduct: If, by your conduct, you prejudice the enjoyment of an excursion by others, we reserve the right to exclude you from that or any future excursions. No refund of the excursion cost will be available in these circumstances.

If you become lost: Should you become separated from your group during an excursion, please locate a taxi and return to the ship immediately, notifying the Reception Desk on arrival. If you have no local currency to pay the driver, the Reception Desk will assist you and charge the amount to your on-board account.

Included in the price: Admission charges to attractions as stated • A guide or driver guide (unless otherwise stated) • A Saga Representative from the ship to accompany the excursion (not as guide or lecturer) • Meals and refreshments as detailed.

Maximum and minimum numbers: All excursions are subject to maximum and minimum numbers. We recommend that you book in advance to secure the excursions of your choice. If there are insufficient bookings, we may have to cancel tours.

Liability: Except for death or personal injury (caused by our negligence) our liability for any loss or damage (including, but not limited to, loss of property) you may suffer during, or in relation to, an excursion is limited to twice the price of the excursion which you pay. These conditions are subject to English law and both parties submit to the exclusive jurisdiction of the English courts.

Please note: Although every effort is made to ensure the accuracy of the shore excursion leaflet, all details are subject to change. We cannot accept any responsibility for such alteration but will notify you of any known change, if possible, prior to or during the cruise.

Payment options: You can pay by debit or credit card. There is no charge for payments made by debit card.



Book online visit saga.co.uk/managemybooking

Saga Holidays is a trading name of ST&H Ltd, a company registered in England and Wales (registration no. 2174052). VAT tax point is date of departure if applicable. Registered office: Enbrook Park Sandgate, Folkestone, Kent CT20 3SE. Telephone (01303) 771111. VAT Reg. No. 201 4215 34. With respect to general insurance products sold in the UK, ST&H Ltd is an appointed representative of Saga Services Limited, which is authorised and regulated by the Financial Conduct Authority. Registered in England and Wales (company no. 732602). ST&H Ltd - ABTA membership number W8164, ATOL number 0308. Saga Cruises Ltd - ABTA membership number W8179. Commission for Aviation Regulation. Travel Agents Licence No. TA 0598. **Package Code: SA374**